

Anti-S100A10 antibody [4E7E10] (STJ98375)

STJ98375

GENERAL INFORMATION

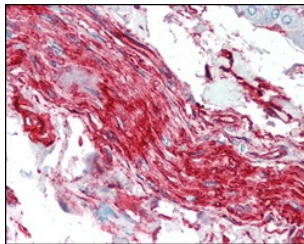
Product Type	Primary antibodies
Short Description	Mouse monoclonal antibody anti-Protein S100-A10 is suitable for use in Western Blot, Immunohistochemistry, Immunofluorescence, Immunocytochemistry and ELISA research applications.
Applications	WB, IHC-P, IF, ICC, ELISA
Host/Source	Mouse
Reactivity	Human

PRODUCT PROPERTIES

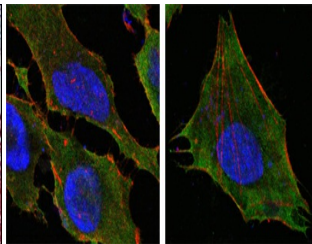
Clonality	Monoclonal
Clone ID	4E7E10
Concentration	
Conjugation	Unconjugated
Purification	The antibody was isolated from ascitic fluid by immunoaffinity chromatography using antigens coupled to agarose beads.
Dilution Range	WB 1:500-1:2000 IHC 1:200-1:1000 IF 1:200-1:1000 ELISA 1:10000
Formulation	Ascitic fluid, 0.03% Sodium Azide, 0.5% BSA, 50% Glycerol.
Isotype	IgG1
Storage Instruction	Store at -20°C for up to 1 year from the date of receipt, and avoid repeat freeze-thaw cycles.

TARGET INFORMATION

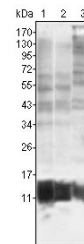
Gene ID	6281
Gene Symbol	S100A10
Uniprot ID	S10AA_HUMAN
Immunogen	Purified recombinant fragment of human S-100A10 expressed in E.coli.
Immunogen Region	
Specificity	S100A10 monoclonal antibody (Protein S100-A10) binds to endogenous Protein S100-A10.
Immunogen Sequence	



Immunohistochemistry analysis of paraffin-embedded human nerve and ganglion cells with AEC staining using S-100A10 monoclonal antibody.



Confocal immunofluorescence analysis of HeLa (left) and L-02 (right) cells using S-100A10 monoclonal antibody (green). Red: Actin filaments have been labeled with DY-554 phalloidin. Blue: DRAQ5 fluorescent DNA dye.



Western blot analysis using S-100A10 monoclonal antibody against MCF-7 (1), HepG2 (2) and HeLa (3).

This product is suitable for in-vitro studies under the RESEARCH USE ONLY [RUO] licence. This product must not be used as for diagnostic or other medical purposes.
St John's Laboratory Ltd, Knowledge Dock Business Centre, University Way, London, E16 2RD | Tel: 0208 223 3081