

Anti-S100A1 antibody [2C8B8/2C8E8/3C8D8] (STJ98373)

STJ98373

GENERAL INFORMATION

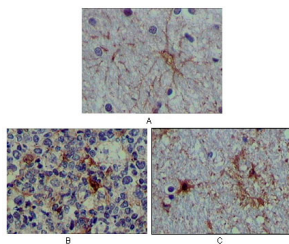
Product Type	Primary antibodies
Short Description	Mouse monoclonal antibody anti-Protein S100-A1 is suitable for use in Western Blot, Immunohistochemistry, Immunofluorescence and ELISA research applications.
Applications	WB, IHC-P, IF-P, ELISA
Host/Source	Mouse
Reactivity	Human

PRODUCT PROPERTIES

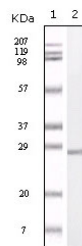
Clonality	Monoclonal
Clone ID	2C8B8/2C8E8/3C8D8
Concentration	
Conjugation	Unconjugated
Purification	The antibody was isolated from ascitic fluid by immunoaffinity chromatography using antigens coupled to agarose beads.
Dilution Range	WB 1:500-1:2000 IHC 1:200-1:1000 ELISA 1:10000
Formulation	Ascitic fluid, 0.03% Sodium Azide, 0.5% BSA, 50% Glycerol.
Isotype	IgG1
Storage Instruction	Store at -20°C for up to 1 year from the date of receipt, and avoid repeat freeze-thaw cycles.

TARGET INFORMATION

Gene ID	6271
Gene Symbol	S100A1
Uniprot ID	S10A1_HUMAN
Immunogen	Purified recombinant fragment of S-100 Alpha expressed in E.coli.
Immunogen Region	
Specificity	S100A1 monoclonal antibody (Protein S100-A1) binds to endogenous Protein S100-A1.
Immunogen Sequence	



Immunohistochemistry analysis of paraffin-embedded human brain tissue (A), lymphoid follicles tissue (B) and interbrain tissue (C), showing cytoplasmic localization with DAB staining using S-100 Alpha monoclonal antibody.



Western blot analysis using S-100 Alpha monoclonal antibody against truncated S-100 Alpha recombinant protein.