

Anti-RPS6KA3 antibody [4E10] (STJ98367)

STJ98367

GENERAL INFORMATION

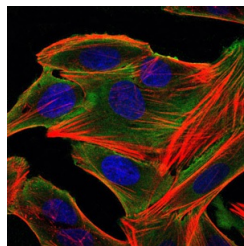
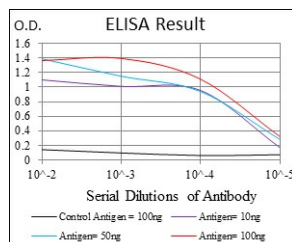
| | |
|--------------------------|--------------------------------------------------------------------------------------------------------------------------------------------------------------------------------------------------|
| Product Type | Primary antibodies |
| Short Description | Mouse monoclonal antibody anti-Ribosomal Protein S6 Kinase Alpha-3 is suitable for use in Western Blot, Immunofluorescence, Immunocytochemistry, Flow Cytometry and ELISA research applications. |
| Applications | WB, IF, ICC, FC, ELISA |
| Host/Source | Mouse |
| Reactivity | Human |

PRODUCT PROPERTIES

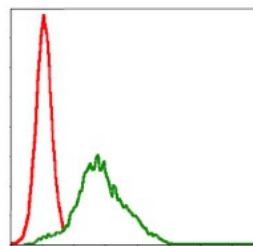
| | |
|----------------------------|------------------------------------------------------------------------------------------------------------------------|
| Clonality | Monoclonal |
| Clone ID | 4E10 |
| Concentration | |
| Conjugation | Unconjugated |
| Purification | The antibody was isolated from ascitic fluid by immunoaffinity chromatography using antigens coupled to agarose beads. |
| Dilution Range | WB 1:500-1:2000 IF 1:200-1:1000 FC 1:200-1:400 ELISA 1:10000 |
| Formulation | Ascitic fluid, 0.03% Sodium Azide, 0.5% BSA, 50% Glycerol. |
| Isotype | IgG1 |
| Storage Instruction | Store at -20°C for up to 1 year from the date of receipt, and avoid repeat freeze-thaw cycles. |

TARGET INFORMATION

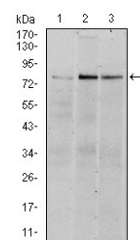
| | |
|---------------------------|----------------------------------------------------------------------------------------------------------------------------|
| Gene ID | 6197 |
| Gene Symbol | RPS6KA3 |
| Uniprot ID | KS6A3_HUMAN |
| Immunogen | Purified recombinant fragment of human Rsk-2 expressed in E.coli. |
| Immunogen Region | |
| Specificity | RPS6KA3 monoclonal antibody (Ribosomal Protein S6 Kinase Alpha-3) binds to endogenous Ribosomal Protein S6 Kinase Alpha-3. |
| Immunogen Sequence | |



Immunofluorescence analysis of HepG2 cells using Rsk-2 monoclonal antibody (green). Blue: DAPI fluorescent DNA dye. Red: Actin filaments have been labeled with Alexa Fluor-555 phalloidin.



Flow cytometric analysis of HepG2 cells using Rsk-2 monoclonal antibody (green) and negative control (red).



Western blot analysis using Rsk-2 monoclonal antibody against HeLa (1), MCF-7 (2), and HepG2 (3) cell lysate.

This product is suitable for in-vitro studies under the RESEARCH USE ONLY [RUO] licence. This product must not be used as for diagnostic or other medical purposes.
St John's Laboratory Ltd, Knowledge Dock Business Centre, University Way, London, E16 2RD | Tel: 0208 223 3081