

Anti-RPS6KA1 antibody [10B1D7A9/10B1D7E12/10B1D7] (STJ98366)

STJ98366

GENERAL INFORMATION

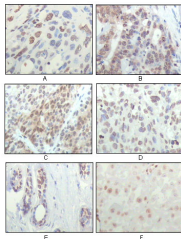
Product Type	Primary antibodies
Short Description	Mouse monoclonal antibody anti-Ribosomal Protein S6 Kinase Alpha-1 is suitable for use in Western Blot, Immunohistochemistry, Immunofluorescence and ELISA research applications.
Applications	WB, IHC-P, IF-P, ELISA
Host/Source	Mouse
Reactivity	Human

PRODUCT PROPERTIES

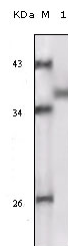
Clonality	Monoclonal
Clone ID	10B1D7A9/10B1D7E12/10B1D7
Concentration	
Conjugation	Unconjugated
Purification	The antibody was isolated from ascitic fluid by immunoaffinity chromatography using antigens coupled to agarose beads.
Dilution Range	WB 1:500-1:2000 IHC 1:200-1:1000 ELISA 1:10000
Formulation	Ascitic fluid, 0.03% Sodium Azide, 0.5% BSA, 50% Glycerol.
Isotype	IgG2a
Storage Instruction	Store at -20°C for up to 1 year from the date of receipt, and avoid repeat freeze-thaw cycles.

TARGET INFORMATION

Gene ID	6195
Gene Symbol	RPS6KA1
Uniprot ID	KS6A1_HUMAN
Immunogen	Purified recombinant fragment of human Rsk-1 expressed in E.coli.
Region	
Specificity	RPS6KA1 monoclonal antibody (Ribosomal Protein S6 Kinase Alpha-1) binds to endogenous Ribosomal Protein S6 Kinase Alpha-1.
Immunogen Sequence	



Immunohistochemistry analysis of paraffin-embedded human esophageal squamous cell carcinoma (A), colon adenocarcinoma (B), liver carcinoma (C), skin carcinoma (D), breast ductal tumor (E) and brain tumor (F), showing nuclear localization with DAB staining



Western blot analysis using Rsk-1 monoclonal antibody against truncated Rsk-1 recombinant protein.