

Anti-ROR1 antibody (30-406) [2H6] (STJ98365)

STJ98365

GENERAL INFORMATION

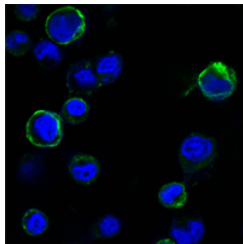
Product Type	Primary antibodies
Short Description	Mouse monoclonal antibody anti-Inactive Tyrosine-Protein Kinase Transmembrane Receptor Ror1 (30-406) is suitable for use in Western Blot, Immunofluorescence, Immunocytochemistry and ELISA research applications.
Applications	WB, IF, ICC, ELISA
Host/Source	Mouse
Reactivity	Human

PRODUCT PROPERTIES

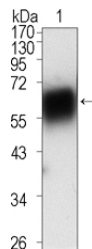
Clonality	Monoclonal
Clone ID	2H6
Concentration	
Conjugation	Unconjugated
Purification	The antibody was isolated from ascitic fluid by immunoaffinity chromatography using antigens coupled to agarose beads.
Dilution Range	WB 1:500-1:2000 IF 1:200-1:1000 ELISA 1:10000
Formulation	Ascitic fluid, 0.03% Sodium Azide, 0.5% BSA, 50% Glycerol.
Isotype	IgG1
Storage Instruction	Store at -20°C for up to 1 year from the date of receipt, and avoid repeat freeze-thaw cycles.

TARGET INFORMATION

Gene ID	4919
Gene Symbol	ROR1
Uniprot ID	ROR1_HUMAN
Immunogen	Recombinant extracellular fragment of human ROR1 (aa30-406) fused with hlgGfc tag, expressed in HEK293 cells
Immunogen Region	30-406
Specificity	ROR1 monoclonal antibody (Inactive Tyrosine-Protein Kinase Transmembrane Receptor Ror1) binds to endogenous Inactive Tyrosine-Protein Kinase Transmembrane Receptor Ror1 at the amino acid region 30-406.
Immunogen Sequence	



Confocal immunofluorescence analysis of HEK293 cells transfected with extracellular ROR1 (aa30-406)-hlgGfc using ROR1 monoclonal antibody (green). Blue: DRAQ5 fluorescent DNA dye.



Western blot analysis using ROR1 monoclonal antibody against extracellular domain of human ROR1 (aa30-423).

This product is suitable for in-vitro studies under the RESEARCH USE ONLY [RUO] licence. This product must not be used as for diagnostic or other medical purposes.
St John's Laboratory Ltd, Knowledge Dock Business Centre, University Way, London, E16 2RD | Tel: 0208 223 3081