

Anti-REG1A antibody [1A4] (STJ98357)

STJ98357

GENERAL INFORMATION

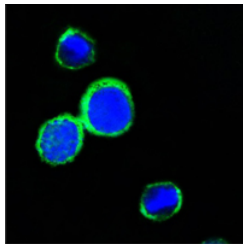
Product Type	Primary antibodies
Short Description	Mouse monoclonal antibody anti-Lithostathine-1-Alpha is suitable for use in Immunohistochemistry, Immunofluorescence, Immunocytochemistry and ELISA research applications.
Applications	IHC-P, IF, ICC, ELISA
Host/Source	Mouse
Reactivity	Human

PRODUCT PROPERTIES

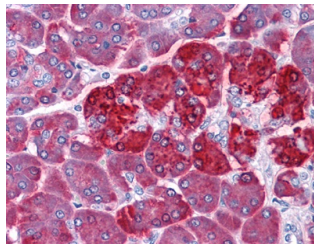
Clonality	Monoclonal
Clone ID	1A4
Concentration	
Conjugation	Unconjugated
Purification	The antibody was isolated from ascitic fluid by immunoaffinity chromatography using antigens coupled to agarose beads.
Dilution Range	IHC 1:200-1:1000 IF 1:200-1:1000 ELISA 1:10000
Formulation	Ascitic fluid, 0.03% Sodium Azide, 0.5% BSA, 50% Glycerol.
Isotype	IgG1
Storage Instruction	Store at -20°C for up to 1 year from the date of receipt, and avoid repeat freeze-thaw cycles.

TARGET INFORMATION

Gene ID	5967
Gene Symbol	REG1A
Uniprot ID	REG1A_HUMAN
Immunogen	Purified recombinant fragment of human Reg I Alpha fused with hlgGfC tag expressed in HEK293 cell line.
Immunogen Region	
Specificity	REG1A monoclonal antibody (Lithostathine-1-Alpha) binds to endogenous Lithostathine-1-Alpha.
Immunogen Sequence	



Confocal immunofluorescence analysis of PC12 cells using Reg I Alpha monoclonal antibody (green). Blue: DAPI fluorescent DNA dye.



Immunohistochemistry analysis of paraffin-embedded human Pancreas tissues with AEC staining using Reg I Alpha monoclonal antibody.