

## Anti-RB1 antibody [7E4B8] (STJ98355)

STJ98355

### GENERAL INFORMATION

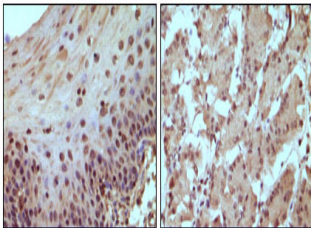
<b>Product Type</b>	Primary antibodies
<b>Short Description</b>	Mouse monoclonal antibody anti-Retinoblastoma-Associated Protein is suitable for use in Immunohistochemistry, Immunofluorescence and ELISA research applications.
<b>Applications</b>	IHC-P, IF-P, ELISA
<b>Host/Source</b>	Mouse
<b>Reactivity</b>	Human

### PRODUCT PROPERTIES

<b>Clonality</b>	Monoclonal
<b>Clone ID</b>	7E4B8
<b>Concentration</b>	
<b>Conjugation</b>	Unconjugated
<b>Purification</b>	The antibody was isolated from ascitic fluid by immunoaffinity chromatography using antigens coupled to agarose beads.
<b>Dilution Range</b>	IHC 1:200-1:1000 ELISA 1:10000
<b>Formulation</b>	Ascitic fluid, 0.03% Sodium Azide, 0.5% BSA, 50% Glycerol.
<b>Isotype</b>	IgG1
<b>Storage Instruction</b>	Store at -20°C for up to 1 year from the date of receipt, and avoid repeat freeze-thaw cycles.

### TARGET INFORMATION

<b>Gene ID</b>	5925
<b>Gene Symbol</b>	RB1
<b>Uniprot ID</b>	RB_HUMAN
<b>Immunogen</b>	Purified recombinant fragment of human Rb expressed in E.coli.
<b>Immunogen Region</b>	
<b>Specificity</b>	RB1 monoclonal antibody (Retinoblastoma-Associated Protein) binds to endogenous Retinoblastoma-Associated Protein.
<b>Immunogen Sequence</b>	



Immunohistochemistry staining of paraffin-embedded human normal esophagus (A) and stomach (B) tissue, showing nucleus localization with DAB staining using Rb monoclonal antibody.