

Anti-BRAF antibody [1H12] (STJ98351)

STJ98351

GENERAL INFORMATION

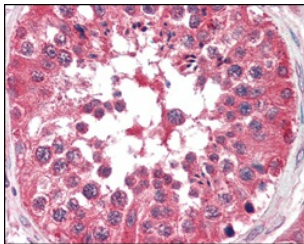
Product Type	Primary antibodies
Short Description	Mouse monoclonal antibody anti-Serine/Threonine-Protein Kinase B-Raf is suitable for use in Western Blot, Immunohistochemistry, Immunofluorescence, Immunocytochemistry and ELISA research applications.
Applications	WB, IHC-P, IF, ICC, ELISA
Host/Source	Mouse
Reactivity	Human, Mouse

PRODUCT PROPERTIES

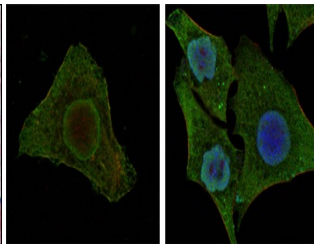
Clonality	Monoclonal
Clone ID	1H12
Concentration	
Conjugation	Unconjugated
Purification	The antibody was isolated from ascitic fluid by immunoaffinity chromatography using antigens coupled to agarose beads.
Dilution Range	WB 1:500-1:2000 IHC 1:200-1:1000 IF 1:200-1:1000 ELISA 1:10000
Formulation	Ascitic fluid, 0.03% Sodium Azide, 0.5% BSA, 50% Glycerol.
Isotype	IgG1
Storage Instruction	Store at -20°C for up to 1 year from the date of receipt, and avoid repeat freeze-thaw cycles.

TARGET INFORMATION

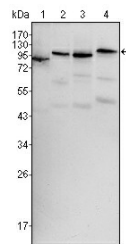
Gene ID	673
Gene Symbol	BRAF
Uniprot ID	BRAF_HUMAN
Immunogen	Purified recombinant fragment of human Raf-B expressed in E.coli.
Immunogen Region	
Specificity	BRAF monoclonal antibody (Serine/Threonine-Protein Kinase B-Raf) binds to endogenous Serine/Threonine-Protein Kinase B-Raf.
Immunogen Sequence	



Immunohistochemistry analysis of paraffin-embedded human testis tissues with AEC staining using Raf-B monoclonal antibody.



Confocal immunofluorescence analysis of MCF-7 (left) and HepG2 (right) cells using Raf-B monoclonal antibody (green). Red: Actin filaments have been labeled with DY-554 phalloidin. Blue: DRAQ5 fluorescent DNA dye



Western blot analysis using Raf-B monoclonal antibody against HeLa (1), HL60 (2), HepG2 (3) and NIH/3T3 (4) cell lysate.

This product is suitable for in-vitro studies under the RESEARCH USE ONLY [RUO] licence. This product must not be used as for diagnostic or other medical purposes.
St John's Laboratory Ltd, Knowledge Dock Business Centre, University Way, London, E16 2RD | Tel: 0208 223 3081