

## Anti-BRAF antibody [1H12F1/1H12G10/1F12F11C9] (STJ98350)

STJ98350

### GENERAL INFORMATION

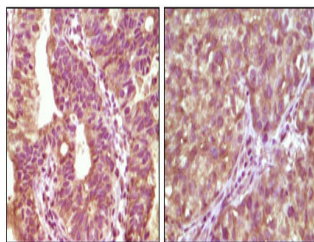
<b>Product Type</b>	Primary antibodies
<b>Short Description</b>	Mouse monoclonal antibody anti-Serine/Threonine-Protein Kinase B-Raf is suitable for use in Western Blot, Immunohistochemistry, Immunofluorescence and ELISA research applications.
<b>Applications</b>	WB, IHC-P, IF-P, ELISA
<b>Host/Source</b>	Mouse
<b>Reactivity</b>	Human

### PRODUCT PROPERTIES

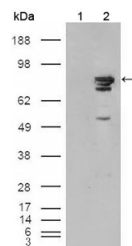
<b>Clonality</b>	Monoclonal
<b>Clone ID</b>	1H12F1/1H12G10/1F12F11C9
<b>Concentration</b>	
<b>Conjugation</b>	Unconjugated
<b>Purification</b>	The antibody was isolated from ascitic fluid by immunoaffinity chromatography using antigens coupled to agarose beads.
<b>Dilution Range</b>	WB 1:500-1:2000 IHC 1:200-1:1000 ELISA 1:10000
<b>Formulation</b>	Ascitic fluid, 0.03% Sodium Azide, 0.5% BSA, 50% Glycerol.
<b>Isotype</b>	IgG1
<b>Storage Instruction</b>	Store at -20°C for up to 1 year from the date of receipt, and avoid repeat freeze-thaw cycles.

### TARGET INFORMATION

<b>Gene ID</b>	673
<b>Gene Symbol</b>	BRAF
<b>Uniprot ID</b>	BRAF_HUMAN
<b>Immunogen</b>	Purified recombinant fragment of Raf-B expressed in E.coli.
<b>Region</b>	
<b>Specificity</b>	BRAF monoclonal antibody (Serine/Threonine-Protein Kinase B-Raf) binds to endogenous Serine/Threonine-Protein Kinase B-Raf.
<b>Immunogen Sequence</b>	



Immunohistochemistry analysis of paraffin-embedded human bladder carcinoma tissue (left) and lung carcinoma tissue (right) showing cytoplasmic localization with DAB staining using Raf-B monoclonal antibody.



Western blot analysis using Raf-B monoclonal antibody against HEK293T cells transfected with the pCMV6-ENTRY control (1) and pCMV6-ENTRY Brf cDNA (2).