

## Anti-RAB10 antibody [4E2] (STJ98346)

STJ98346

### GENERAL INFORMATION

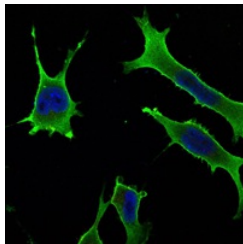
<b>Product Type</b>	Primary antibodies
<b>Short Description</b>	Mouse monoclonal antibody anti-Ras-Related Protein Rab-10 is suitable for use in Western Blot, Immunofluorescence, Immunocytochemistry and ELISA research applications.
<b>Applications</b>	WB, IF, ICC, ELISA
<b>Host/Source</b>	Mouse
<b>Reactivity</b>	Human, Mouse

### PRODUCT PROPERTIES

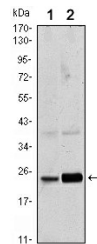
<b>Clonality</b>	Monoclonal
<b>Clone ID</b>	4E2
<b>Concentration</b>	
<b>Conjugation</b>	Unconjugated
<b>Purification</b>	The antibody was isolated from ascitic fluid by immunoaffinity chromatography using antigens coupled to agarose beads.
<b>Dilution Range</b>	WB 1:500-1:2000 IF 1:200-1:1000 ELISA 1:10000
<b>Formulation</b>	Ascitic fluid, 0.03% Sodium Azide, 0.5% BSA, 50% Glycerol.
<b>Isotype</b>	IgG1
<b>Storage Instruction</b>	Store at -20°C for up to 1 year from the date of receipt, and avoid repeat freeze-thaw cycles.

### TARGET INFORMATION

<b>Gene ID</b>	10890
<b>Gene Symbol</b>	RAB10
<b>Uniprot ID</b>	RAB10_HUMAN
<b>Immunogen</b>	Purified recombinant fragment of human Rab 10 expressed in E.coli.
<b>Immunogen Region</b>	
<b>Specificity</b>	RAB10 monoclonal antibody (Ras-Related Protein Rab-10) binds to endogenous Ras-Related Protein Rab-10.
<b>Immunogen Sequence</b>	



Immunofluorescence analysis of LOVO cells using Rab 10 monoclonal antibody (green). Blue: DRAQS fluorescent DNA dye.



Western blot analysis using Rab 10 monoclonal antibody against HeLa (1) and NIH/3T3 (2) cell lysate.