

Anti-PTH1R antibody [4D2] (STJ98344)

STJ98344

GENERAL INFORMATION

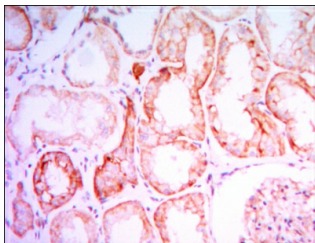
Product Type	Primary antibodies
Short Description	Mouse monoclonal antibody anti-Parathyroid Hormone/Parathyroid Hormone-Related Peptide Receptor is suitable for use in Western Blot, Immunohistochemistry, Immunofluorescence, Immunocytochemistry and ELISA research applications.
Applications	WB, IHC-P, IF, ICC, ELISA
Host/Source	Mouse
Reactivity	Human

PRODUCT PROPERTIES

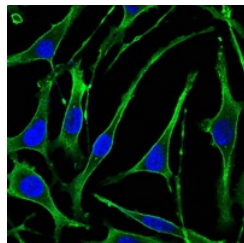
Clonality	Monoclonal
Clone ID	4D2
Concentration	
Conjugation	Unconjugated
Purification	The antibody was isolated from ascitic fluid by immunoaffinity chromatography using antigens coupled to agarose beads.
Dilution Range	WB 1:500-1:2000 IHC 1:200-1:1000 IF 1:200-1:1000 ELISA 1:10000
Formulation	Ascitic fluid, 0.03% Sodium Azide, 0.5% BSA, 50% Glycerol.
Isotype	IgG1
Storage Instruction	Store at -20°C for up to 1 year from the date of receipt, and avoid repeat freeze-thaw cycles.

TARGET INFORMATION

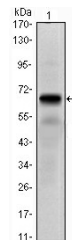
Gene ID	5745
Gene Symbol	PTH1R
Uniprot ID	PTH1R_HUMAN
Immunogen	Purified recombinant fragment of human PTH/PTHrP-R expressed in E.coli.
Immunogen Region	
Specificity	PTH1R monoclonal antibody (Parathyroid Hormone/Parathyroid Hormone-Related Peptide Receptor) binds to endogenous Parathyroid Hormone/Parathyroid Hormone-Related Peptide Receptor.
Immunogen Sequence	



Immunohistochemistry analysis of paraffin-embedded human kidney tissues with DAB staining using PTH/PTHrP-R monoclonal antibody.



Immunofluorescence analysis of SK-BR-3 cells using PTH/PTHrP-R monoclonal antibody (green). Blue: DRAQ5 fluorescent DNA dye.



Western blot analysis using PTH/PTHrP-R monoclonal antibody against PTH1R-rlgGfc transfected HEK293 cell lysate.

This product is suitable for in-vitro studies under the RESEARCH USE ONLY [RUO] licence. This product must not be used as for diagnostic or other medical purposes.
St John's Laboratory Ltd, Knowledge Dock Business Centre, University Way, London, E16 2RD | Tel: 0208 223 3081