

Anti-KLK3 antibody (26-251) [5A11E9/5A11E2] (STJ98341)

STJ98341

GENERAL INFORMATION

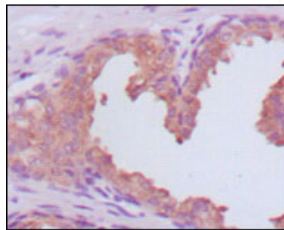
Product Type	Primary antibodies
Short Description	Mouse monoclonal antibody anti-Prostate-Specific antigen (26-251) is suitable for use in Western Blot, Immunohistochemistry, Immunofluorescence, Flow Cytometry and ELISA research applications.
Applications	WB, IHC-P, IF-P, FC, ELISA
Host/Source	Mouse
Reactivity	Human

PRODUCT PROPERTIES

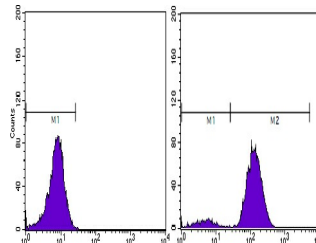
Clonality	Monoclonal
Clone ID	5A11E9/5A11E2
Concentration	
Conjugation	Unconjugated
Purification	The antibody was isolated from ascitic fluid by immunoaffinity chromatography using antigens coupled to agarose beads.
Dilution Range	WB 1:500-1:2000 IHC 1:200-1:1000 FC 1:200-1:400 ELISA 1:10000
Formulation	Ascitic fluid, 0.03% Sodium Azide, 0.5% BSA, 50% Glycerol.
Isotype	IgG1
Storage Instruction	Store at -20°C for up to 1 year from the date of receipt, and avoid repeat freeze-thaw cycles.

TARGET INFORMATION

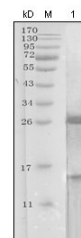
Gene ID	354
Gene Symbol	KLK3
Uniprot ID	KLK3_HUMAN
Immunogen	Purified recombinant fragment of PSA (aa26-251) expressed in E.coli.
Immunogen Region	26-251
Specificity	KLK3 monoclonal antibody (Prostate-Specific Antigen) binds to endogenous Prostate-Specific Antigen at the amino acid region 26-251.
Immunogen Sequence	



Immunohistochemistry analysis of paraffin-embedded human prostate carcinoma tissues, showing cytoplasmic localization with DAB staining using PSA monoclonal antibody.



Flow cytometric analysis of PC-3 cells using PSA monoclonal antibody (right) and negative control (left).



Western blot analysis using PSA monoclonal antibody against truncated PSA recombinant protein.

This product is suitable for in-vitro studies under the RESEARCH USE ONLY [RUO] licence. This product must not be used as for diagnostic or other medical purposes.
St John's Laboratory Ltd, Knowledge Dock Business Centre, University Way, London, E16 2RD | Tel: 0208 223 3081