

## Anti-ATP2C1 antibody [4G12] (STJ98326)

STJ98326

### GENERAL INFORMATION

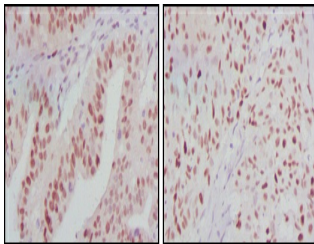
<b>Product Type</b>	Primary antibodies
<b>Short Description</b>	Mouse monoclonal antibody anti-Calcium-Transporting Atpase Type 2c Member 1 is suitable for use in Western Blot, Immunohistochemistry, Immunofluorescence and ELISA research applications.
<b>Applications</b>	WB, IHC-P, IF-P, ELISA
<b>Host/Source</b>	Mouse
<b>Reactivity</b>	Human, Monkey

### PRODUCT PROPERTIES

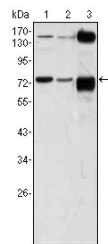
<b>Clonality</b>	Monoclonal
<b>Clone ID</b>	4G12
<b>Concentration</b>	
<b>Conjugation</b>	Unconjugated
<b>Purification</b>	The antibody was isolated from ascitic fluid by immunoaffinity chromatography using antigens coupled to agarose beads.
<b>Dilution Range</b>	WB 1:500-1:2000 IHC 1:200-1:1000 ELISA 1:10000
<b>Formulation</b>	Ascitic fluid, 0.03% Sodium Azide, 0.5% BSA, 50% Glycerol.
<b>Isotype</b>	IgG1
<b>Storage Instruction</b>	Store at -20°C for up to 1 year from the date of receipt, and avoid repeat freeze-thaw cycles.

### TARGET INFORMATION

<b>Gene ID</b>	27032
<b>Gene Symbol</b>	ATP2C1
<b>Uniprot ID</b>	AT2C1_HUMAN
<b>Immunogen</b>	Purified recombinant fragment of PMR1 expressed in E.coli.
<b>Immunogen Region</b>	
<b>Specificity</b>	ATP2C1 monoclonal antibody (Calcium-Transporting Atpase Type 2c Member 1) binds to endogenous Calcium-Transporting Atpase Type 2c Member 1.
<b>Immunogen Sequence</b>	



Immunohistochemistry analysis of paraffin-embedded human ovarian cancer (left) and breast cancer (right) tissues with DAB staining using PMR1 monoclonal antibody.



Western blot analysis using PMR1 monoclonal antibody against A431 (1), HeLa (2) and HEK293 (3) cell lysate.

This product is suitable for in-vitro studies under the RESEARCH USE ONLY [RUO] licence. This product must not be used as for diagnostic or other medical purposes.  
 St John's Laboratory Ltd, Knowledge Dock Business Centre, University Way, London, E16 2RD | Tel: 0208 223 3081