

## Anti-MAPK11 antibody (251-363) [4H6H6] (STJ98300)

STJ98300

### GENERAL INFORMATION

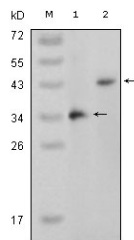
<b>Product Type</b>	Primary antibodies
<b>Short Description</b>	Mouse monoclonal antibody anti-Mitogen-Activated Protein Kinase 11 (251-363) is suitable for use in Western Blot and ELISA research applications.
<b>Applications</b>	WB, ELISA
<b>Host/Source</b>	Mouse
<b>Reactivity</b>	Human

### PRODUCT PROPERTIES

<b>Clonality</b>	Monoclonal
<b>Clone ID</b>	4H6H6
<b>Concentration</b>	
<b>Conjugation</b>	Unconjugated
<b>Purification</b>	The antibody was isolated from ascitic fluid by immunoaffinity chromatography using antigens coupled to agarose beads.
<b>Dilution Range</b>	WB 1:500-1:2000 ELISA 1:10000
<b>Formulation</b>	Ascitic fluid, 0.03% Sodium Azide, 0.5% BSA, 50% Glycerol.
<b>Isotype</b>	IgG1
<b>Storage</b>	Store at -20°C for up to 1 year from the date of receipt, and avoid repeat freeze-thaw cycles.
<b>Instruction</b>	

### TARGET INFORMATION

<b>Gene ID</b>	5600
<b>Gene Symbol</b>	MAPK11
<b>Uniprot ID</b>	MK11_HUMAN
<b>Immunogen</b>	Purified recombinant fragment of p38 Beta (aa251-363) expressed in E.coli.
<b>Immunogen Region</b>	251-363
<b>Specificity</b>	MAPK11 monoclonal antibody (Mitogen-Activated Protein Kinase 11) binds to endogenous Mitogen-Activated Protein Kinase 11 at the amino acid region 251-363.
<b>Immunogen Sequence</b>	



Western blot analysis using p38 Beta monoclonal antibody against truncated p38 Beta recombinant protein (1) and full-length p38 Beta (aa1-363) - pcDNA3.1 transfected CHO-K1 cell lysate (2).