

Anti-SLC17A1 antibody [4B4D1] (STJ98283)

STJ98283

GENERAL INFORMATION

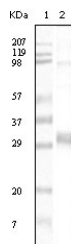
Product Type	Primary antibodies
Short Description	Mouse monoclonal antibody anti-Sodium-Dependent Phosphate Transport Protein 1 is suitable for use in Western Blot and ELISA research applications.
Applications	WB, ELISA
Host/Source	Mouse
Reactivity	Human

PRODUCT PROPERTIES

Clonality	Monoclonal
Clone ID	4B4D1
Concentration	
Conjugation	Unconjugated
Purification	The antibody was isolated from ascitic fluid by immunoaffinity chromatography using antigens coupled to agarose beads.
Dilution Range	WB 1:500-1:2000 ELISA 1:10000
Formulation	Ascitic fluid, 0.03% Sodium Azide, 0.5% BSA, 50% Glycerol.
Isotype	IgG2a
Storage	Store at -20°C for up to 1 year from the date of receipt, and avoid repeat freeze-thaw cycles.
Instruction	

TARGET INFORMATION

Gene ID	6568
Gene Symbol	SLC17A1
Uniprot ID	NPT1_HUMAN
Immunogen	Purified recombinant fragment of NPT1 expressed in E.coli.
Immunogen Region	
Specificity	SLC17A1 monoclonal antibody (Sodium-Dependent Phosphate Transport Protein 1) binds to endogenous Sodium-Dependent Phosphate Transport Protein 1.
Immunogen Sequence	



Western blot analysis using NPT1 monoclonal antibody against truncated NPT1 recombinant protein.