

## Anti-NFKB1 antibody [5D10] (STJ98275)

STJ98275

### GENERAL INFORMATION

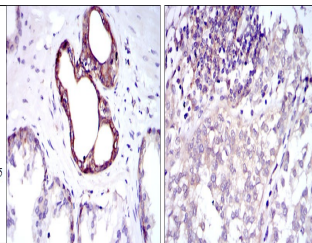
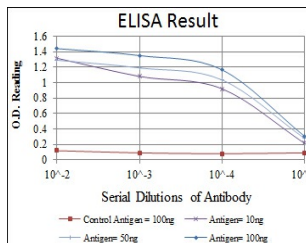
<b>Product Type</b>	Primary antibodies
<b>Short Description</b>	Mouse monoclonal antibody anti-Nuclear Factor Nf-Kappa-B P105 Subunit is suitable for use in Western Blot, Immunohistochemistry, Immunofluorescence, Flow Cytometry and ELISA research applications.
<b>Applications</b>	WB, IHC-P, IF-P, FC, ELISA
<b>Host/Source</b>	Mouse
<b>Reactivity</b>	Human

### PRODUCT PROPERTIES

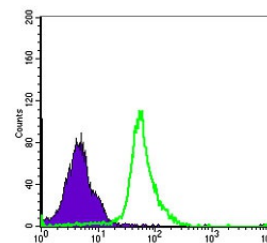
<b>Clonality</b>	Monoclonal
<b>Clone ID</b>	5D10
<b>Concentration</b>	
<b>Conjugation</b>	Unconjugated
<b>Purification</b>	The antibody was isolated from ascitic fluid by immunoaffinity chromatography using antigens coupled to agarose beads.
<b>Dilution Range</b>	WB 1:500-1:2000 IHC 1:200-1:1000 FC 1:200-1:400 ELISA 1:10000
<b>Formulation</b>	Ascitic fluid, 0.03% Sodium Azide, 0.5% BSA, 50% Glycerol.
<b>Isotype</b>	IgG2a
<b>Storage Instruction</b>	Store at -20°C for up to 1 year from the date of receipt, and avoid repeat freeze-thaw cycles.

### TARGET INFORMATION

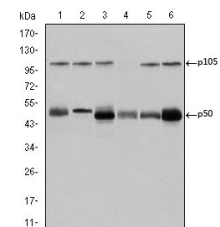
<b>Gene ID</b>	4790
<b>Gene Symbol</b>	NFKB1
<b>Uniprot ID</b>	NFKB1_HUMAN
<b>Immunogen</b>	Purified recombinant fragment of human NF Kappa B-p105/p50 expressed in E.coli.
<b>Immunogen Region</b>	
<b>Specificity</b>	NFKB1 monoclonal antibody (Nuclear Factor Nf-Kappa-B P105 Subunit) binds to endogenous Nuclear Factor Nf-Kappa-B P105 Subunit.
<b>Immunogen Sequence</b>	



Immunohistochemistry analysis of paraffin-embedded prostate tissues (left) and bladder cancer tissues (right) with DAB staining using NF Kappa B-p105/p50 monoclonal antibody.



Flow cytometric analysis of MCF-7 cells using NF Kappa B-p105/p50 monoclonal antibody (green) and negative control (purple).



Western blot analysis using NF Kappa B-p105/p50 monoclonal antibody against K562 (1), Jurkat (2), A431 (3), HeLa (4), THP-1 (5) and MCF-7 (6) cell lysate.

This product is suitable for in-vitro studies under the RESEARCH USE ONLY [RUO] licence. This product must not be used as for diagnostic or other medical purposes.  
St John's Laboratory Ltd, Knowledge Dock Business Centre, University Way, London, E16 2RD | Tel: 0208 223 3081