

Anti-MTDH antibody [2F11C3] (STJ98256)

STJ98256

GENERAL INFORMATION

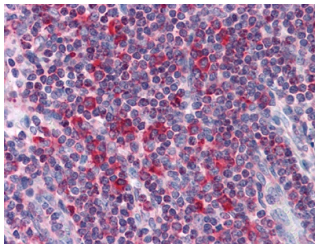
Product Type	Primary antibodies
Short Description	Mouse monoclonal antibody anti-Protein Lyric is suitable for use in Western Blot, Immunohistochemistry, Immunofluorescence, Flow Cytometry and ELISA research applications.
Applications	WB, IHC-P, IF-P, FC, ELISA
Host/Source	Mouse
Reactivity	Human

PRODUCT PROPERTIES

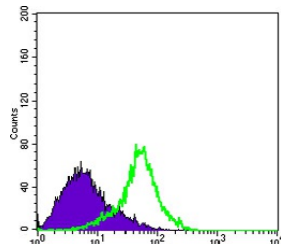
Clonality	Monoclonal
Clone ID	2F11C3
Concentration	
Conjugation	Unconjugated
Purification	The antibody was isolated from ascitic fluid by immunoaffinity chromatography using antigens coupled to agarose beads.
Dilution Range	WB 1:500-1:2000 IHC 1:200-1:1000 FC 1:200-1:400 ELISA 1:10000
Formulation	Ascitic fluid, 0.03% Sodium Azide, 0.5% BSA, 50% Glycerol.
Isotype	IgG1
Storage Instruction	Store at -20°C for up to 1 year from the date of receipt, and avoid repeat freeze-thaw cycles.

TARGET INFORMATION

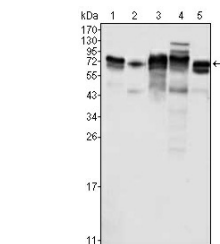
Gene ID	92140
Gene Symbol	MTDH
Uniprot ID	LYRIC_HUMAN
Immunogen	Purified recombinant fragment of human MTDH expressed in E.coli.
Immunogen Region	
Specificity	MTDH monoclonal antibody (Protein Lyric) binds to endogenous Protein Lyric.
Immunogen Sequence	



Immunohistochemistry analysis of paraffin-embedded human Liver tissues with AEC staining using MTDH monoclonal antibody.



Flow cytometric analysis of HeLa cells using MTDH monoclonal antibody (green) and negative control (purple).



Western blot analysis using MTDH monoclonal antibody against K562 (1), SKBR-3 (2), T47D (3), HeLa (4) and MCF-7 (5) cell lysate.

This product is suitable for in-vitro studies under the RESEARCH USE ONLY [RUO] licence. This product must not be used as for diagnostic or other medical purposes.
St John's Laboratory Ltd, Knowledge Dock Business Centre, University Way, London, E16 2RD | Tel: 0208 223 3081