

Anti-MSI2 antibody [2C11] (STJ98254)

STJ98254

GENERAL INFORMATION

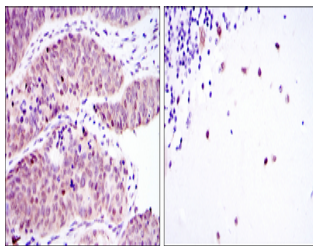
Product Type	Primary antibodies
Short Description	Mouse monoclonal antibody anti-Rna-Binding Protein Musashi Homolog 2 is suitable for use in Western Blot, Immunohistochemistry, Immunofluorescence and ELISA research applications.
Applications	WB, IHC-P, IF-P, ELISA
Host/Source	Mouse
Reactivity	Human

PRODUCT PROPERTIES

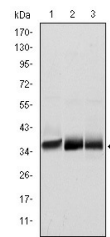
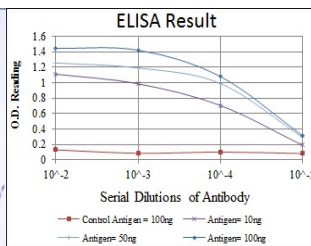
Clonality	Monoclonal
Clone ID	2C11
Concentration	
Conjugation	Unconjugated
Purification	The antibody was isolated from ascitic fluid by immunoaffinity chromatography using antigens coupled to agarose beads.
Dilution Range	WB 1:500-1:2000 IHC 1:200-1:1000 ELISA 1:10000
Formulation	Ascitic fluid, 0.03% Sodium Azide, 0.5% BSA, 50% Glycerol.
Isotype	IgG1
Storage Instruction	Store at -20°C for up to 1 year from the date of receipt, and avoid repeat freeze-thaw cycles.

TARGET INFORMATION

Gene ID	124540
Gene Symbol	MSI2
Uniprot ID	MSI2H_HUMAN
Immunogen	Purified recombinant fragment of human Msi2 expressed in E.coli.
Immunogen Region	
Specificity	MSI2 monoclonal antibody (Rna-Binding Protein Musashi Homolog 2) binds to endogenous Rna-Binding Protein Musashi Homolog 2.
Immunogen Sequence	



Immunohistochemistry analysis of paraffin-embedded ovarian cancer (left) and cerebellum tissues (right) with DAB staining using Msi2 monoclonal antibody.



Western blot analysis using Msi2 monoclonal antibody against NTERA-2 (1), SW620 (2) and T47D (3) cell lysate.