

Anti-MSI1 antibody [2A12] (STJ98253)

STJ98253

GENERAL INFORMATION

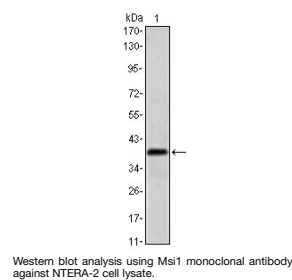
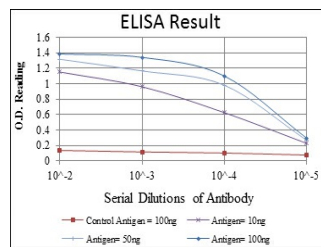
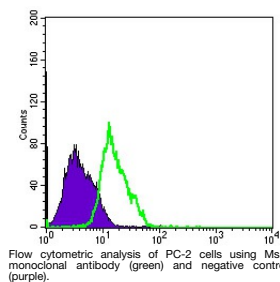
Product Type	Primary antibodies
Short Description	Mouse monoclonal antibody anti-Rna-Binding Protein Musashi Homolog 1 is suitable for use in Western Blot, Flow Cytometry and ELISA research applications.
Applications	WB, FC, ELISA
Host/Source	Mouse
Reactivity	Human

PRODUCT PROPERTIES

Clonality	Monoclonal
Clone ID	2A12
Concentration	
Conjugation	Unconjugated
Purification	The antibody was isolated from ascitic fluid by immunoaffinity chromatography using antigens coupled to agarose beads.
Dilution Range	WB 1:500-1:2000 FC 1:200-1:400 ELISA 1:10000
Formulation	Ascitic fluid, 0.03% Sodium Azide, 0.5% BSA, 50% Glycerol.
Isotype	IgG1
Storage Instruction	Store at -20°C for up to 1 year from the date of receipt, and avoid repeat freeze-thaw cycles.

TARGET INFORMATION

Gene ID	4440
Gene Symbol	MSI1
Uniprot ID	MSI1H_HUMAN
Immunogen	Purified recombinant fragment of human Msi1 expressed in E.coli.
Immunogen Region	
Specificity	MSI1 monoclonal antibody (Rna-Binding Protein Musashi Homolog 1) binds to endogenous Rna-Binding Protein Musashi Homolog 1.
Immunogen Sequence	



This product is suitable for in-vitro studies under the RESEARCH USE ONLY [RUO] licence. This product must not be used as for diagnostic or other medical purposes.
St John's Laboratory Ltd, Knowledge Dock Business Centre, University Way, London, E16 2RD | Tel: 0208 223 3081