

Anti-MSH2 antibody [1B3=3A2B8C] (STJ98252)

STJ98252

GENERAL INFORMATION

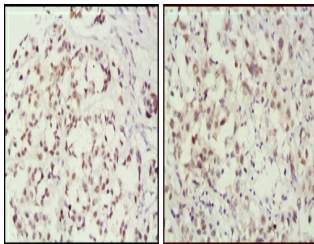
Product Type	Primary antibodies
Short Description	Mouse monoclonal antibody anti-Dna Mismatch Repair Protein Msh2 is suitable for use in Western Blot, Immunohistochemistry, Immunofluorescence, Immunocytochemistry and ELISA research applications.
Applications	WB, IHC-P, IF, ICC, ELISA
Host/Source	Mouse
Reactivity	Human, Monkey

PRODUCT PROPERTIES

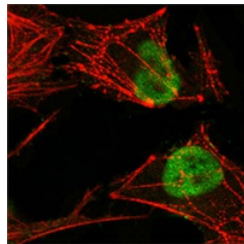
Clonality	Monoclonal
Clone ID	1B3=3A2B8C
Concentration	
Conjugation	Unconjugated
Purification	The antibody was isolated from ascitic fluid by immunoaffinity chromatography using antigens coupled to agarose beads.
Dilution Range	WB 1:500-1:2000 IHC 1:200-1:1000 IF 1:200-1:1000 ELISA 1:10000
Formulation	Ascitic fluid, 0.03% Sodium Azide, 0.5% BSA, 50% Glycerol.
Isotype	IgG1
Storage Instruction	Store at -20°C for up to 1 year from the date of receipt, and avoid repeat freeze-thaw cycles.

TARGET INFORMATION

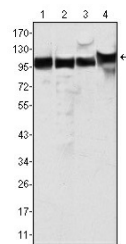
Gene ID	4436
Gene Symbol	MSH2
Uniprot ID	MSH2_HUMAN
Immunogen	Purified recombinant fragment of human MSH2 expressed in E.coli.
Immunogen Region	
Specificity	MSH2 monoclonal antibody (Dna Mismatch Repair Protein Msh2) binds to endogenous Dna Mismatch Repair Protein Msh2.
Immunogen Sequence	



Immunohistochemistry analysis of paraffin-embedded human breast cancer (left) and lung cancer (right) tissues, showing nuclear localization with DAB staining using MSH2 monoclonal antibody.



Confocal immunofluorescence analysis of HeLa cells using MSH2 monoclonal antibody (green), showing nuclear localization. Red: Actin filaments have been labeled with Alexa Fluor-555 phalloidin.



Western blot analysis using MSH2 monoclonal antibody against HeLa (1), A549 (2), A431 (3) and HEK293 (4) cell lysate.