

Anti-KMT2A antibody (3751-3968) [10F8D7] (STJ98246)

STJ98246

GENERAL INFORMATION

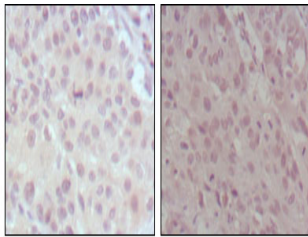
Product Type	Primary antibodies
Short Description	Mouse monoclonal antibody anti-Histone-Lysine N-Methyltransferase 2a (3751-3968) is suitable for use in Western Blot, Immunohistochemistry, Immunofluorescence and ELISA research applications.
Applications	WB, IHC-P, IF-P, ELISA
Host/Source	Mouse
Reactivity	Human

PRODUCT PROPERTIES

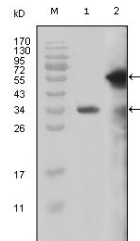
Clonality	Monoclonal
Clone ID	10F8D7
Concentration	
Conjugation	Unconjugated
Purification	The antibody was isolated from ascitic fluid by immunoaffinity chromatography using antigens coupled to agarose beads.
Dilution Range	WB 1:500-1:2000 IHC 1:200-1:1000 ELISA 1:10000
Formulation	Ascitic fluid, 0.03% Sodium Azide, 0.5% BSA, 50% Glycerol.
Isotype	IgG1
Storage Instruction	Store at -20°C for up to 1 year from the date of receipt, and avoid repeat freeze-thaw cycles.

TARGET INFORMATION

Gene ID	4297
Gene Symbol	KMT2A
Uniprot ID	KMT2A_HUMAN
Immunogen	Purified recombinant fragment of MLL (aa3751-3968) expressed in E.coli.
Immunogen Region	3751-3968
Specificity	KMT2A monoclonal antibody (Histone-Lysine N-Methyltransferase 2a) binds to endogenous Histone-Lysine N-Methyltransferase 2a at the amino acid region 3751-3968.
Immunogen Sequence	



Immunohistochemistry analysis of paraffin-embedded human lung cancer (left) and esophagus cancer (right), showing nuclear localization with DAB staining using MLL monoclonal antibody.



Western blot analysis using MLL monoclonal antibody against truncated MLL recombinant protein (1) and truncated GFP-MLL (aa3714-3969) transfected Cos7 cell lysate (2).