

Anti-MAP2K6 antibody [3H12C8] (STJ98240)

STJ98240

GENERAL INFORMATION

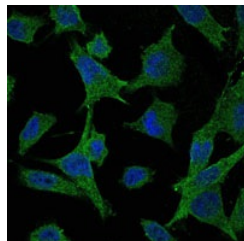
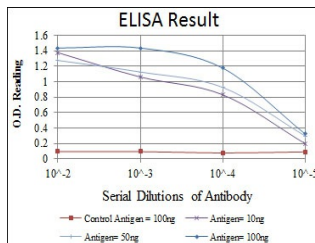
Product Type	Primary antibodies
Short Description	Mouse monoclonal antibody anti-Dual Specificity Mitogen-Activated Protein Kinase Kinase 6 is suitable for use in Western Blot, Immunofluorescence, Immunocytochemistry, Flow Cytometry and ELISA research applications.
Applications	WB, IF, ICC, FC, ELISA
Host/Source	Mouse
Reactivity	Human, Mouse

PRODUCT PROPERTIES

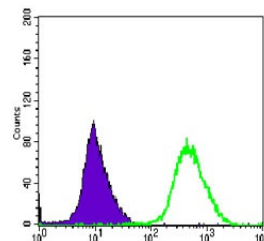
Clonality	Monoclonal
Clone ID	3H12C8
Concentration	
Conjugation	Unconjugated
Purification	The antibody was isolated from ascitic fluid by immunoaffinity chromatography using antigens coupled to agarose beads.
Dilution Range	WB 1:500-1:2000 IF 1:200-1:1000 FC 1:200-1:400 ELISA 1:10000
Formulation	Ascitic fluid, 0.03% Sodium Azide, 0.5% BSA, 50% Glycerol.
Isotype	IgG1
Storage Instruction	Store at -20°C for up to 1 year from the date of receipt, and avoid repeat freeze-thaw cycles.

TARGET INFORMATION

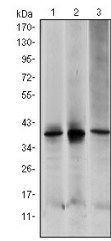
Gene ID	5608
Gene Symbol	MAP2K6
Uniprot ID	MP2K6_HUMAN
Immunogen	Purified recombinant fragment of human MEK-6 expressed in E.coli.
Immunogen Region	
Specificity	MAP2K6 monoclonal antibody (Dual Specificity Mitogen-Activated Protein Kinase Kinase 6) binds to endogenous Dual Specificity Mitogen-Activated Protein Kinase Kinase 6.
Immunogen Sequence	



Immunofluorescence analysis of HeLa cells using MEK-6 monoclonal antibody (green). Blue: DRAQ5 fluorescent DNA dye.



Flow cytometric analysis of HeLa cells using MEK-6 monoclonal antibody (green) and negative control (purple).



Western blot analysis using MEK-6 monoclonal antibody against HepG2 (1), MCF-7 (2) and NIH/3T3 (3) cell lysate.

This product is suitable for in-vitro studies under the RESEARCH USE ONLY [RUO] licence. This product must not be used as for diagnostic or other medical purposes.
St John's Laboratory Ltd, Knowledge Dock Business Centre, University Way, London, E16 2RD | Tel: 0208 223 3081