

Anti-CSF1 antibody [2D10] (STJ98234)

STJ98234

GENERAL INFORMATION

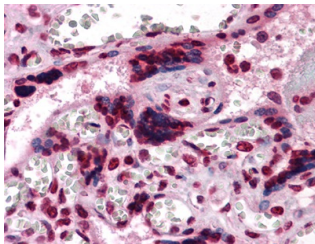
Product Type	Primary antibodies
Short Description	Mouse monoclonal antibody anti-Macrophage Colony-Stimulating Factor 1 is suitable for use in Western Blot, Immunohistochemistry, Immunofluorescence and ELISA research applications.
Applications	WB, IHC-P, IF-P, ELISA
Host/Source	Mouse
Reactivity	Human

PRODUCT PROPERTIES

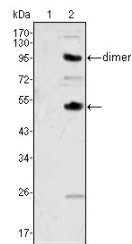
Clonality	Monoclonal
Clone ID	2D10
Concentration	
Conjugation	Unconjugated
Purification	The antibody was isolated from ascitic fluid by immunoaffinity chromatography using antigens coupled to agarose beads.
Dilution Range	WB 1:500-1:2000 IHC 1:200-1:1000 ELISA 1:10000
Formulation	Ascitic fluid, 0.03% Sodium Azide, 0.5% BSA, 50% Glycerol.
Isotype	IgG1
Storage Instruction	Store at -20°C for up to 1 year from the date of receipt, and avoid repeat freeze-thaw cycles.

TARGET INFORMATION

Gene ID	1435
Gene Symbol	CSF1
Uniprot ID	CSF1_HUMAN
Immunogen	Purified recombinant fragment of human M-CSF expressed in E.coli.
Immunogen Region	
Specificity	CSF1 monoclonal antibody (Macrophage Colony-Stimulating Factor 1) binds to endogenous Macrophage Colony-Stimulating Factor 1.
Immunogen Sequence	



Immunohistochemistry analysis of paraffin-embedded human Placenta tissues with AEC staining using M-CSF monoclonal antibody.



Western blot analysis using M-CSF monoclonal antibody against human recombinant CSF2 (1) and CSF1 (2).

This product is suitable for in-vitro studies under the RESEARCH USE ONLY [RUO] licence. This product must not be used as for diagnostic or other medical purposes.
St John's Laboratory Ltd, Knowledge Dock Business Centre, University Way, London, E16 2RD | Tel: 0208 223 3081