

## Anti-KARS1 antibody (90-174) [8G12C1] (STJ98227)

STJ98227

### GENERAL INFORMATION

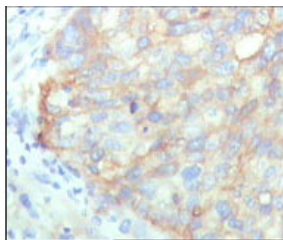
<b>Product Type</b>	Primary antibodies
<b>Short Description</b>	Mouse monoclonal antibody anti-Lysine--Trna Ligase (90-174) is suitable for use in Western Blot, Immunohistochemistry, Immunofluorescence and ELISA research applications.
<b>Applications</b>	WB, IHC-P, IF-P, ELISA
<b>Host/Source</b>	Mouse
<b>Reactivity</b>	Human

### PRODUCT PROPERTIES

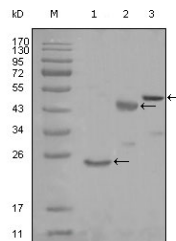
<b>Clonality</b>	Monoclonal
<b>Clone ID</b>	8G12C1
<b>Concentration</b>	
<b>Conjugation</b>	Unconjugated
<b>Purification</b>	The antibody was isolated from ascitic fluid by immunoaffinity chromatography using antigens coupled to agarose beads.
<b>Dilution Range</b>	WB 1:500-1:2000 IHC 1:200-1:1000 ELISA 1:10000
<b>Formulation</b>	Ascitic fluid, 0.03% Sodium Azide, 0.5% BSA, 50% Glycerol.
<b>Isotype</b>	IgG1
<b>Storage Instruction</b>	Store at -20°C for up to 1 year from the date of receipt, and avoid repeat freeze-thaw cycles.

### TARGET INFORMATION

<b>Gene ID</b>	3735
<b>Gene Symbol</b>	KARS1
<b>Uniprot ID</b>	SYK_HUMAN
<b>Immunogen</b>	Purified recombinant fragment of LysRS (aa90-174) expressed in E.coli.
<b>Immunogen Region</b>	90-174
<b>Specificity</b>	KARS1 monoclonal antibody (Lysine--Trna Ligase) binds to endogenous Lysine--Trna Ligase at the amino acid region 90-174.
<b>Immunogen Sequence</b>	



Immunohistochemistry analysis of paraffin-embedded human cervical carcinoma, showing cytoplasmic localization with DAB staining using LysRS monoclonal antibody.



Western blot analysis using LysRS monoclonal antibody against truncated Trx-LysRS recombinant protein (1), truncated MBP-LysRS (aa90-174) and full length LysRS (aa1-188) transfected CHO-K1 cell lysate (3).