

Anti-LPP antibody [8B3A11] (STJ98223)

STJ98223

GENERAL INFORMATION

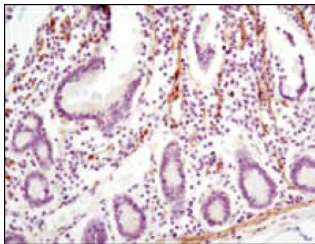
Product Type	Primary antibodies
Short Description	Mouse monoclonal antibody anti-Lipoma-Preferred Partner is suitable for use in Western Blot, Immunohistochemistry, Immunofluorescence, Immunocytochemistry and ELISA research applications.
Applications	WB, IHC-P, IF, ICC, ELISA
Host/Source	Mouse
Reactivity	Human, Mouse, Simian, Hamster

PRODUCT PROPERTIES

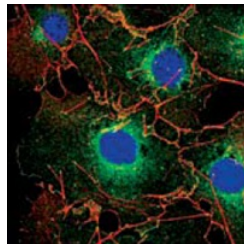
Clonality	Monoclonal
Clone ID	8B3A11
Concentration	
Conjugation	Unconjugated
Purification	The antibody was isolated from ascitic fluid by immunoaffinity chromatography using antigens coupled to agarose beads.
Dilution Range	WB 1:500-1:2000 IHC 1:200-1:1000 IF 1:200-1:1000 ELISA 1:10000
Formulation	Ascitic fluid, 0.03% Sodium Azide, 0.5% BSA, 50% Glycerol.
Isotype	IgG1
Storage Instruction	Store at -20°C for up to 1 year from the date of receipt, and avoid repeat freeze-thaw cycles.

TARGET INFORMATION

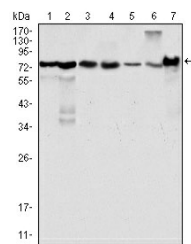
Gene ID	4026
Gene Symbol	LPP
Uniprot ID	LPP_HUMAN
Immunogen	Purified recombinant fragment of human LPP expressed in E.coli.
Immunogen Region	
Specificity	LPP monoclonal antibody (Lipoma-Preferred Partner) binds to endogenous Lipoma-Preferred Partner.
Immunogen Sequence	



Immunohistochemistry analysis of paraffin-embedded human small intestine with DAB staining using LPP monoclonal antibody.



Confocal immunofluorescence analysis of COS cells using LPP monoclonal antibody (green). Red: Actin filaments have been labeled using DY-554 phalloidin. Blue: DRAQ5 fluorescent DNA dye.



Western blot analysis using LPP monoclonal antibody against HeLa (1), NIH/3T3 (2), COS (3), Caki (4), MCF-7 (5), HepG2 (6) and SMMC-7721 (7) cell lysate.