

Anti-LCN1 antibody [10B10] (STJ98219)

STJ98219

GENERAL INFORMATION

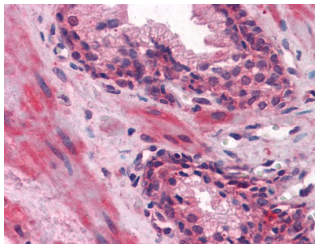
Product Type	Primary antibodies
Short Description	Mouse monoclonal antibody anti-Lipocalin-1 is suitable for use in Western Blot, Immunohistochemistry, Immunofluorescence, Immunocytochemistry and ELISA research applications.
Applications	WB, IHC-P, IF, ICC, ELISA
Host/Source	Mouse
Reactivity	Human

PRODUCT PROPERTIES

Clonality	Monoclonal
Clone ID	10B10
Concentration	
Conjugation	Unconjugated
Purification	The antibody was isolated from ascitic fluid by immunoaffinity chromatography using antigens coupled to agarose beads.
Dilution Range	WB 1:500-1:2000 IHC 1:200-1:1000 IF 1:200-1:1000 ELISA 1:10000
Formulation	Ascitic fluid, 0.03% Sodium Azide, 0.5% BSA, 50% Glycerol.
Isotype	IgG1
Storage Instruction	Store at -20°C for up to 1 year from the date of receipt, and avoid repeat freeze-thaw cycles.

TARGET INFORMATION

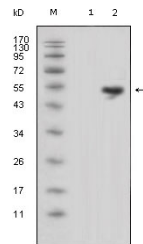
Gene ID	3933
Gene Symbol	LCN1
Uniprot ID	LCN1_HUMAN
Immunogen	Purified recombinant fragment of Lipocalin-1 expressed in E.coli.
Immunogen Region	
Specificity	LCN1 monoclonal antibody (Lipocalin-1) binds to endogenous Lipocalin-1.
Immunogen Sequence	



Immunohistochemistry analysis of paraffin-embedded human Prostate tissues with AEC staining using Lipocalin-1 monoclonal antibody.



Confocal immunofluorescence analysis of methanol-fixed HEK293 cells transfected with LCN1-hlgGfc using Lipocalin-1 monoclonal antibody (green) showing membrane localization. Blue: DRAQ5 fluorescent DNA dye.



Western blot analysis using Lipocalin-1 monoclonal antibody against HEK293 (1) and LCN1-hlgGfc transfected HEK293 cell lysate (2).

This product is suitable for in-vitro studies under the RESEARCH USE ONLY [RUO] licence. This product must not be used as for diagnostic or other medical purposes.
St John's Laboratory Ltd, Knowledge Dock Business Centre, University Way, London, E16 2RD | Tel: 0208 223 3081