

Anti-LIN28A antibody (93-209) [6D1F9] (STJ98218)

STJ98218

GENERAL INFORMATION

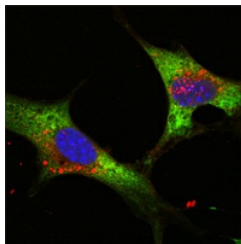
Product Type	Primary antibodies
Short Description	Mouse monoclonal antibody anti-Protein Lin-28 Homolog A (93-209) is suitable for use in Western Blot, Immunofluorescence, Immunocytochemistry and ELISA research applications.
Applications	WB, IF, ICC, ELISA
Host/Source	Mouse
Reactivity	Human

PRODUCT PROPERTIES

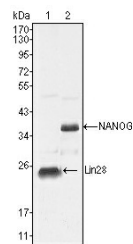
Clonality	Monoclonal
Clone ID	6D1F9
Concentration	1 mg/mL
Conjugation	Unconjugated
Purification	The antibody was isolated from ascitic fluid by immunoaffinity chromatography using antigens coupled to agarose beads.
Dilution Range	WB 1:500-1:2000 IF 1:200-1:1000 ELISA 1:10000
Formulation	0.01M PBS, pH 7.4, 0.03% Sodium Azide.
Isotype	IgG1
Storage Instruction	Store at -20°C for up to 1 year from the date of receipt, and avoid repeat freeze-thaw cycles.

TARGET INFORMATION

Gene ID	79727
Gene Symbol	LIN28A
Uniprot ID	LN28A_HUMAN
Immunogen	Purified recombinant fragment of LIN-28 (aa93-209) expressed in E.coli.
Immunogen Region	93-209
Specificity	LIN28A monoclonal antibody (Protein Lin-28 Homolog A) binds to endogenous Protein Lin-28 Homolog A at the amino acid region 93-209.
Immunogen Sequence	



Confocal immunofluorescence analysis of NTERA-2 cells using LIN-28 monoclonal antibody (green). Blue: DRAQ5 fluorescent DNA dye.



Western blot analysis using LIN-28 monoclonal antibody against NTERA-2 cell lysate (1).

This product is suitable for in-vitro studies under the RESEARCH USE ONLY [RUO] licence. This product must not be used as for diagnostic or other medical purposes.
St John's Laboratory Ltd, Knowledge Dock Business Centre, University Way, London, E16 2RD | Tel: 0208 223 3081