

Anti-LHX2 antibody [6G2] (STJ98217)

STJ98217

GENERAL INFORMATION

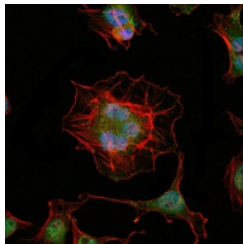
Product Type	Primary antibodies
Short Description	Mouse monoclonal antibody anti-Lim/Homeobox Protein Lhx2 is suitable for use in Western Blot, Immunofluorescence, Immunocytochemistry and ELISA research applications.
Applications	WB, IF, ICC, ELISA
Host/Source	Mouse
Reactivity	Human

PRODUCT PROPERTIES

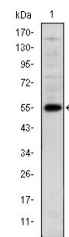
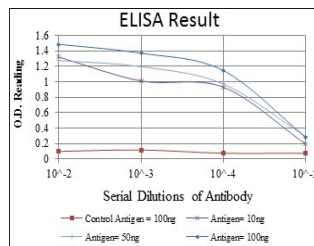
Clonality	Monoclonal
Clone ID	6G2
Concentration	
Conjugation	Unconjugated
Purification	The antibody was isolated from ascitic fluid by immunoaffinity chromatography using antigens coupled to agarose beads.
Dilution Range	WB 1:500-1:2000 IF 1:200-1:1000 ELISA 1:10000
Formulation	Ascitic fluid, 0.03% Sodium Azide, 0.5% BSA, 50% Glycerol.
Isotype	IgG1
Storage Instruction	Store at -20°C for up to 1 year from the date of receipt, and avoid repeat freeze-thaw cycles.

TARGET INFORMATION

Gene ID	9355
Gene Symbol	LHX2
Uniprot ID	LHX2_HUMAN
Immunogen	Purified recombinant fragment of human LHX2 expressed in E.coli.
Immunogen Region	
Specificity	LHX2 monoclonal antibody (Lim/Homeobox Protein Lhx2) binds to endogenous Lim/Homeobox Protein Lhx2.
Immunogen Sequence	



Immunofluorescence analysis of HeLa cells using LHX2 monoclonal antibody (green). Blue: DRAQ5 fluorescent DNA dye. Red: Actin filaments have been labeled with Alexa Fluor-555 phalloidin.



Western blot analysis using LHX2 monoclonal antibody against human LHX2 (AA: 200-406) recombinant protein.

This product is suitable for in-vitro studies under the RESEARCH USE ONLY [RUO] licence. This product must not be used as for diagnostic or other medical purposes.
St John's Laboratory Ltd, Knowledge Dock Business Centre, University Way, London, E16 2RD | Tel: 0208 223 3081