

Anti-LAMB1 antibody (31-270) [2D9G5] (STJ98214)

STJ98214

GENERAL INFORMATION

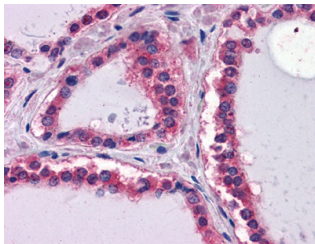
Product Type	Primary antibodies
Short Description	Mouse monoclonal antibody anti-Laminin Subunit Beta-1 (31-270) is suitable for use in Western Blot, Immunohistochemistry, Immunofluorescence and ELISA research applications.
Applications	WB, IHC-P, IF-P, ELISA
Host/Source	Mouse
Reactivity	Human

PRODUCT PROPERTIES

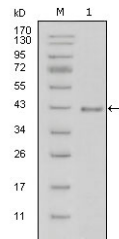
Clonality	Monoclonal
Clone ID	2D9G5
Concentration	
Conjugation	Unconjugated
Purification	The antibody was isolated from ascitic fluid by immunoaffinity chromatography using antigens coupled to agarose beads.
Dilution Range	WB 1:500-1:2000 IHC 1:200-1:1000 ELISA 1:10000
Formulation	Ascitic fluid, 0.03% Sodium Azide, 0.5% BSA, 50% Glycerol.
Isotype	IgG2a
Storage Instruction	Store at -20°C for up to 1 year from the date of receipt, and avoid repeat freeze-thaw cycles.

TARGET INFORMATION

Gene ID	3912
Gene Symbol	LAMB1
Uniprot ID	LAMB1_HUMAN
Immunogen	Purified recombinant fragment of Laminin Beta-1 (aa31-270) expressed in E.coli.
Immunogen Region	31-270
Specificity	LAMB1 monoclonal antibody (Laminin Subunit Beta-1) binds to endogenous Laminin Subunit Beta-1 at the amino acid region 31-270.
Immunogen Sequence	



Immunohistochemistry analysis of paraffin-embedded human Thyroid tissues with AEC staining using Laminin Beta-1 monoclonal antibody.



Western blot analysis using Laminin Beta-1 monoclonal antibody against truncated Laminin Beta-1-His recombinant protein (1).

This product is suitable for in-vitro studies under the RESEARCH USE ONLY [RUO] licence. This product must not be used as for diagnostic or other medical purposes.
St John's Laboratory Ltd, Knowledge Dock Business Centre, University Way, London, E16 2RD | Tel: 0208 223 3081