

Anti-KLHL25 antibody [1B7] (STJ98206)

STJ98206

GENERAL INFORMATION

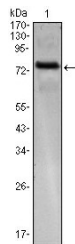
Product Type	Primary antibodies
Short Description	Mouse monoclonal antibody anti-Kelch-Like Protein 25 is suitable for use in Western Blot and ELISA research applications.
Applications	WB, ELISA
Host/Source	Mouse
Reactivity	Human

PRODUCT PROPERTIES

Clonality	Monoclonal
Clone ID	1B7
Concentration	
Conjugation	Unconjugated
Purification	The antibody was isolated from ascitic fluid by immunoaffinity chromatography using antigens coupled to agarose beads.
Dilution Range	WB 1:500-1:2000 ELISA 1:10000
Formulation	Ascitic fluid, 0.03% Sodium Azide, 0.5% BSA, 50% Glycerol.
Isotype	IgG2b
Storage Instruction	Store at -20°C for up to 1 year from the date of receipt, and avoid repeat freeze-thaw cycles.

TARGET INFORMATION

Gene ID	64410
Gene Symbol	KLHL25
Uniprot ID	KLH25_HUMAN
Immunogen	Purified recombinant fragment of human KLHL25 expressed in E.coli.
Immunogen Region	
Specificity	KLHL25 monoclonal antibody (Kelch-Like Protein 25) binds to endogenous Kelch-Like Protein 25.
Immunogen Sequence	



Western blot analysis using KLHL25 monoclonal antibody against KLHL25-hlgGfc transfected HEK293 cell.

This product is suitable for in-vitro studies under the RESEARCH USE ONLY [RUO] licence. This product must not be used as for diagnostic or other medical purposes.
St John's Laboratory Ltd, Knowledge Dock Business Centre, University Way, London, E16 2RD | Tel: 0208 223 3081