

Anti-KLHL22 antibody [7B10] (STJ98205)

STJ98205

GENERAL INFORMATION

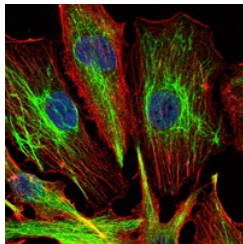
Product Type	Primary antibodies
Short Description	Mouse monoclonal antibody anti-Kelch-Like Protein 22 is suitable for use in Western Blot, Immunofluorescence, Immunocytochemistry and ELISA research applications.
Applications	WB, IF, ICC, ELISA
Host/Source	Mouse
Reactivity	Human

PRODUCT PROPERTIES

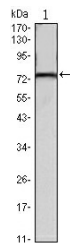
Clonality	Monoclonal
Clone ID	7B10
Concentration	
Conjugation	Unconjugated
Purification	The antibody was isolated from ascitic fluid by immunoaffinity chromatography using antigens coupled to agarose beads.
Dilution Range	WB 1:500-1:2000 IF 1:200-1:1000 ELISA 1:10000
Formulation	Ascitic fluid, 0.03% Sodium Azide, 0.5% BSA, 50% Glycerol.
Isotype	IgG1
Storage Instruction	Store at -20°C for up to 1 year from the date of receipt, and avoid repeat freeze-thaw cycles.

TARGET INFORMATION

Gene ID	84861
Gene Symbol	KLHL22
Uniprot ID	KLH22_HUMAN
Immunogen	Purified recombinant fragment of human KLHL22 expressed in E.coli.
Immunogen Region	
Specificity	KLHL22 monoclonal antibody (Kelch-Like Protein 22) binds to endogenous Kelch-Like Protein 22.
Immunogen Sequence	



Immunofluorescence analysis of U251 cells using KLHL22 monoclonal antibody (green). Blue: DAPI fluorescent DNA dye. Red: Actin filaments have been labeled with Alexa Fluor-555 phalloidin.



Western blot analysis using KLHL22 monoclonal antibody against mouse brain tissues lysate.