

Anti-KLHL21 antibody [2H4] (STJ98204)

STJ98204

GENERAL INFORMATION

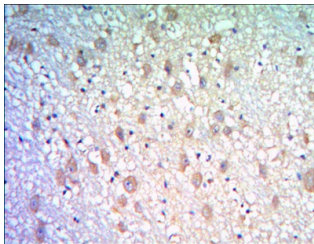
Product Type	Primary antibodies
Short Description	Mouse monoclonal antibody anti-Kelch-Like Protein 21 is suitable for use in Western Blot, Immunohistochemistry, Immunofluorescence and ELISA research applications.
Applications	WB, IHC-P, IF-P, ELISA
Host/Source	Mouse
Reactivity	Human

PRODUCT PROPERTIES

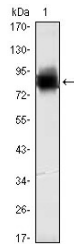
Clonality	Monoclonal
Clone ID	2H4
Concentration	
Conjugation	Unconjugated
Purification	The antibody was isolated from ascitic fluid by immunoaffinity chromatography using antigens coupled to agarose beads.
Dilution Range	WB 1:500-1:2000 IHC 1:200-1:1000 ELISA 1:10000
Formulation	Ascitic fluid, 0.03% Sodium Azide, 0.5% BSA, 50% Glycerol.
Isotype	IgG1
Storage Instruction	Store at -20°C for up to 1 year from the date of receipt, and avoid repeat freeze-thaw cycles.

TARGET INFORMATION

Gene ID	9903
Gene Symbol	KLHL21
Uniprot ID	KLH21_HUMAN
Immunogen	Purified recombinant fragment of human KLHL21 expressed in E.coli.
Immunogen Region	
Specificity	KLHL21 monoclonal antibody (Kelch-Like Protein 21) binds to endogenous Kelch-Like Protein 21.
Immunogen Sequence	



Immunohistochemistry analysis of paraffin-embedded human brain tissues with DAB staining using KLHL21 monoclonal antibody.



Western blot analysis using KLHL21 monoclonal antibody against recombinant KLHL21 protein (1).