

Anti-KLHL11 antibody [1B9A8] (STJ98200)

STJ98200

GENERAL INFORMATION

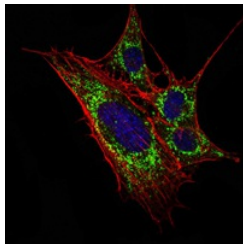
Product Type	Primary antibodies
Short Description	Mouse monoclonal antibody anti-Kelch-Like Protein 11 is suitable for use in Western Blot, Immunofluorescence, Immunocytochemistry, Flow Cytometry and ELISA research applications.
Applications	WB, IF, ICC, FC, ELISA
Host/Source	Mouse
Reactivity	Human

PRODUCT PROPERTIES

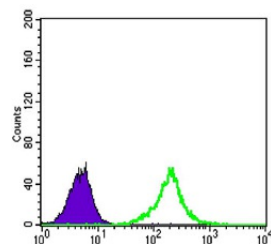
Clonality	Monoclonal
Clone ID	1B9A8
Concentration	
Conjugation	Unconjugated
Purification	The antibody was isolated from ascitic fluid by immunoaffinity chromatography using antigens coupled to agarose beads.
Dilution Range	WB 1:500-1:2000 IF 1:200-1:1000 FC 1:200-1:400 ELISA 1:10000
Formulation	Ascitic fluid, 0.03% Sodium Azide, 0.5% BSA, 50% Glycerol.
Isotype	IgG1
Storage Instruction	Store at -20°C for up to 1 year from the date of receipt, and avoid repeat freeze-thaw cycles.

TARGET INFORMATION

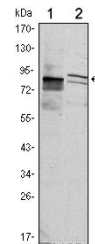
Gene ID	55175
Gene Symbol	KLHL11
Uniprot ID	KLH11_HUMAN
Immunogen	Purified recombinant fragment of human KLHL11 expressed in E.coli.
Immunogen Region	
Specificity	KLHL11 monoclonal antibody (Kelch-Like Protein 11) binds to endogenous Kelch-Like Protein 11.
Immunogen Sequence	



Immunofluorescence analysis of 3T3-L1 cells using KLHL11 monoclonal antibody (green). Blue: DRAQ5 fluorescent DNA dye. Red: Actin filaments have been labeled with Alexa Fluor-555 phalloidin.



Flow cytometric analysis of K562 cells using KLHL11 monoclonal antibody (green) and negative control (purple).



Western blot analysis using KLHL11 monoclonal antibody against HeLa (1) and MCF-7 (2) cell lysate.