

Anti-KIF22 antibody [5F3] (STJ98196)

STJ98196

GENERAL INFORMATION

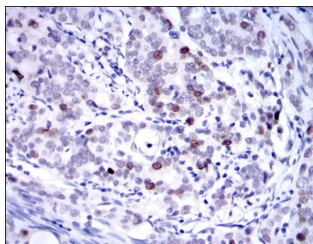
Product Type	Primary antibodies
Short Description	Mouse monoclonal antibody anti-Kinesin-Like Protein Kif22 is suitable for use in Western Blot, Immunohistochemistry, Immunofluorescence and ELISA research applications.
Applications	WB, IHC-P, IF-P, ELISA
Host/Source	Mouse
Reactivity	Human

PRODUCT PROPERTIES

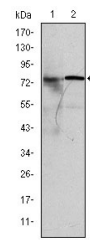
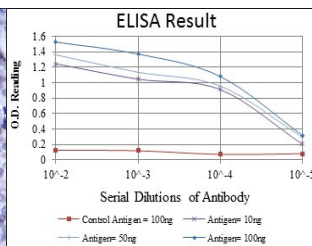
Clonality	Monoclonal
Clone ID	5F3
Concentration	
Conjugation	Unconjugated
Purification	The antibody was isolated from ascitic fluid by immunoaffinity chromatography using antigens coupled to agarose beads.
Dilution Range	WB 1:500-1:2000 IHC 1:200-1:1000 ELISA 1:10000
Formulation	Ascitic fluid, 0.03% Sodium Azide, 0.5% BSA, 50% Glycerol.
Isotype	IgG1
Storage Instruction	Store at -20°C for up to 1 year from the date of receipt, and avoid repeat freeze-thaw cycles.

TARGET INFORMATION

Gene ID	3835
Gene Symbol	KIF22
Uniprot ID	KIF22_HUMAN
Immunogen	Purified recombinant fragment of human KID expressed in E.coli.
Immunogen Region	
Specificity	KIF22 monoclonal antibody (Kinesin-Like Protein Kif22) binds to endogenous Kinesin-Like Protein Kif22.
Immunogen Sequence	



Immunohistochemistry analysis of paraffin-embedded cervical cancer tissues with DAB staining using KIF22 monoclonal antibody.



Western blot analysis using KIF22 monoclonal antibody against MCF-7 (1) and HeLa (2) cell lysate.