

Anti-KDM3A antibody [2E1] (STJ98190)

STJ98190

GENERAL INFORMATION

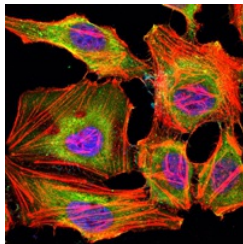
Product Type	Primary antibodies
Short Description	Mouse monoclonal antibody anti-Lysine-Specific Demethylase 3a is suitable for use in Western Blot, Immunofluorescence, Immunocytochemistry and ELISA research applications.
Applications	WB, IF, ICC, ELISA
Host/Source	Mouse
Reactivity	Human

PRODUCT PROPERTIES

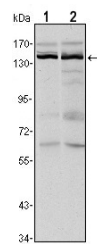
Clonality	Monoclonal
Clone ID	2E1
Concentration	
Conjugation	Unconjugated
Purification	The antibody was isolated from ascitic fluid by immunoaffinity chromatography using antigens coupled to agarose beads.
Dilution Range	WB 1:500-1:2000 IF 1:200-1:1000 ELISA 1:10000
Formulation	Ascitic fluid, 0.03% Sodium Azide, 0.5% BSA, 50% Glycerol.
Isotype	IgG1
Storage Instruction	Store at -20°C for up to 1 year from the date of receipt, and avoid repeat freeze-thaw cycles.

TARGET INFORMATION

Gene ID	55818
Gene Symbol	KDM3A
Uniprot ID	KDM3A_HUMAN
Immunogen	Purified recombinant fragment of human JMJD1A expressed in E.coli.
Immunogen Region	
Specificity	KDM3A monoclonal antibody (Lysine-Specific Demethylase 3a) binds to endogenous Lysine-Specific Demethylase 3a.
Immunogen Sequence	



Immunofluorescence analysis of HeLa cells using JMJD1A monoclonal antibody (green). Blue: DAPI fluorescent DNA dye. Red: Actin filaments have been labeled with Alexa Fluor-555 phalloidin.



Western blot analysis using JMJD1A monoclonal antibody against HeLa (1) and HepG2 (2) cell lysate.

This product is suitable for in-vitro studies under the RESEARCH USE ONLY [RUO] licence. This product must not be used as for diagnostic or other medical purposes.
St John's Laboratory Ltd, Knowledge Dock Business Centre, University Way, London, E16 2RD | Tel: 0208 223 3081