

## Anti-KDM3A antibody [1E12] (STJ98189)

STJ98189

### GENERAL INFORMATION

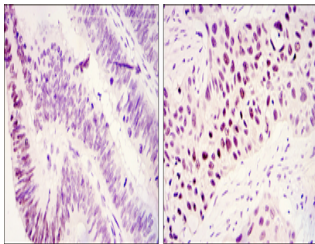
<b>Product Type</b>	Primary antibodies
<b>Short Description</b>	Mouse monoclonal antibody anti-Lysine-Specific Demethylase 3a is suitable for use in Western Blot, Immunohistochemistry, Immunofluorescence and ELISA research applications.
<b>Applications</b>	WB, IHC-P, IF-P, ELISA
<b>Host/Source</b>	Mouse
<b>Reactivity</b>	Human

### PRODUCT PROPERTIES

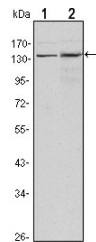
<b>Clonality</b>	Monoclonal
<b>Clone ID</b>	1E12
<b>Concentration</b>	
<b>Conjugation</b>	Unconjugated
<b>Purification</b>	The antibody was isolated from ascitic fluid by immunoaffinity chromatography using antigens coupled to agarose beads.
<b>Dilution Range</b>	WB 1:500-1:2000 IHC 1:200-1:1000 ELISA 1:10000
<b>Formulation</b>	Ascitic fluid, 0.03% Sodium Azide, 0.5% BSA, 50% Glycerol.
<b>Isotype</b>	IgG1
<b>Storage Instruction</b>	Store at -20°C for up to 1 year from the date of receipt, and avoid repeat freeze-thaw cycles.

### TARGET INFORMATION

<b>Gene ID</b>	55818
<b>Gene Symbol</b>	KDM3A
<b>Uniprot ID</b>	KDM3A_HUMAN
<b>Immunogen</b>	Purified recombinant fragment of human JMJD1A expressed in E.coli.
<b>Immunogen Region</b>	
<b>Specificity</b>	KDM3A monoclonal antibody (Lysine-Specific Demethylase 3a) binds to endogenous Lysine-Specific Demethylase 3a.
<b>Immunogen Sequence</b>	



Immunohistochemistry analysis of paraffin-embedded colonic cancer tissues (left) and lung cancer tissues (right) with DAB staining using JMJD1A monoclonal antibody.



Western blot analysis using JMJD1A monoclonal antibody against HeLa (1) and HepG2 (2) cell lysate.

This product is suitable for in-vitro studies under the RESEARCH USE ONLY [RUO] licence. This product must not be used as for diagnostic or other medical purposes.  
St John's Laboratory Ltd, Knowledge Dock Business Centre, University Way, London, E16 2RD | Tel: 0208 223 3081