

Anti-ISL1 antibody [1B1] (STJ98185)

STJ98185

GENERAL INFORMATION

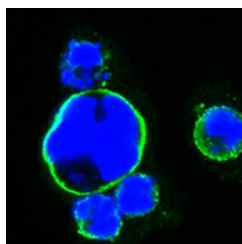
Product Type	Primary antibodies
Short Description	Mouse monoclonal antibody anti-Insulin Gene Enhancer Protein Isl-1 is suitable for use in Western Blot, Immunofluorescence, Immunocytochemistry and ELISA research applications.
Applications	WB, IF, ICC, ELISA
Host/Source	Mouse
Reactivity	Human

PRODUCT PROPERTIES

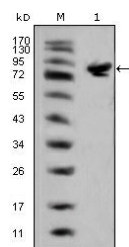
Clonality	Monoclonal
Clone ID	1B1
Concentration	
Conjugation	Unconjugated
Purification	The antibody was isolated from ascitic fluid by immunoaffinity chromatography using antigens coupled to agarose beads.
Dilution Range	WB 1:500-1:2000 IF 1:200-1:1000 ELISA 1:10000
Formulation	Ascitic fluid, 0.03% Sodium Azide, 0.5% BSA, 50% Glycerol.
Isotype	IgG1
Storage Instruction	Store at -20°C for up to 1 year from the date of receipt, and avoid repeat freeze-thaw cycles.

TARGET INFORMATION

Gene ID	3670
Gene Symbol	ISL1
Uniprot ID	ISL1_HUMAN
Immunogen	Purified recombinant fragment of human Islet-1 expressed in E.coli.
Immunogen Region	
Specificity	ISL1 monoclonal antibody (Insulin Gene Enhancer Protein Isl-1) binds to endogenous Insulin Gene Enhancer Protein Isl-1.
Immunogen Sequence	



Confocal immunofluorescence analysis of HEK293 cells transfected with full-length Islet-1-hlgGfc using Islet-1 monoclonal antibody (green). Blue: DRAQ5 fluorescent DNA dye.



Western blot analysis using Islet-1 monoclonal antibody against full-length Islet-1 (aa1-349)-hlgGfc transfected HEK293 cell lysate (1).

This product is suitable for in-vitro studies under the RESEARCH USE ONLY [RUO] licence. This product must not be used as for diagnostic or other medical purposes.
St John's Laboratory Ltd, Knowledge Dock Business Centre, University Way, London, E16 2RD | Tel: 0208 223 3081