

Anti-ISL1 antibody [1H9] (STJ98184)

STJ98184

GENERAL INFORMATION

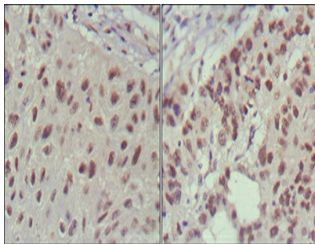
Product Type	Primary antibodies
Short Description	Mouse monoclonal antibody anti-Insulin Gene Enhancer Protein Isl-1 is suitable for use in Western Blot, Immunohistochemistry, Immunofluorescence, Immunocytochemistry and ELISA research applications.
Applications	WB, IHC-P, IF, ICC, ELISA
Host/Source	Mouse
Reactivity	Human

PRODUCT PROPERTIES

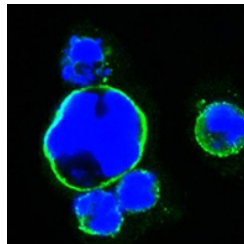
Clonality	Monoclonal
Clone ID	1H9
Concentration	
Conjugation	Unconjugated
Purification	The antibody was isolated from ascitic fluid by immunoaffinity chromatography using antigens coupled to agarose beads.
Dilution Range	WB 1:500-1:2000 IHC 1:200-1:1000 IF 1:200-1:1000 ELISA 1:10000
Formulation	Ascitic fluid, 0.03% Sodium Azide, 0.5% BSA, 50% Glycerol.
Isotype	IgG1
Storage Instruction	Store at -20°C for up to 1 year from the date of receipt, and avoid repeat freeze-thaw cycles.

TARGET INFORMATION

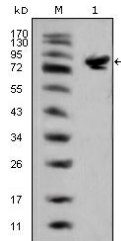
Gene ID	3670
Gene Symbol	ISL1
Uniprot ID	ISL1_HUMAN
Immunogen	Purified recombinant fragment of human Islet-1 expressed in E.coli.
Region	
Specificity	ISL1 monoclonal antibody (Insulin Gene Enhancer Protein Isl-1) binds to endogenous Insulin Gene Enhancer Protein Isl-1.
Immunogen Sequence	



Immunohistochemistry analysis of paraffin-embedded human lung cancer (left) and cervical carcinoma (right), showing nuclear localization with DAB staining using Islet-1 monoclonal antibody.



Confocal immunofluorescence analysis of HEK293 cells transfected with full-length ISL1-hlgGfc using Islet-1 monoclonal antibody (green). Blue: DRAQ5 fluorescent DNA dye.



Western blot analysis using Islet-1 monoclonal antibody against full-length ISL1 (aa1-349)-hlgGfc transfected HEK293 cell lysate (1).

This product is suitable for in-vitro studies under the RESEARCH USE ONLY [RUO] licence. This product must not be used as for diagnostic or other medical purposes.
St John's Laboratory Ltd, Knowledge Dock Business Centre, University Way, London, E16 2RD | Tel: 0208 223 3081