

## Anti-ERN1 antibody (282-433) [9F2] (STJ98183)

STJ98183

### GENERAL INFORMATION

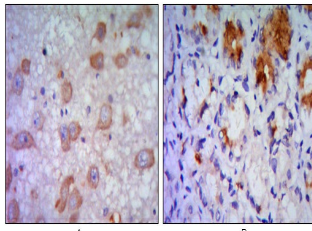
<b>Product Type</b>	Primary antibodies
<b>Short Description</b>	Mouse monoclonal antibody anti-Serine/Threonine-Protein Kinase/Endoribonuclease Ire1 (282-433) is suitable for use in Western Blot, Immunohistochemistry, Immunofluorescence and ELISA research applications.
<b>Applications</b>	WB, IHC-P, IF-P, ELISA
<b>Host/Source</b>	Mouse
<b>Reactivity</b>	Human

### PRODUCT PROPERTIES

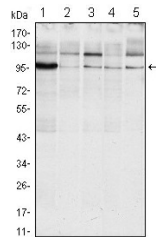
<b>Clonality</b>	Monoclonal
<b>Clone ID</b>	9F2
<b>Concentration</b>	
<b>Conjugation</b>	Unconjugated
<b>Purification</b>	The antibody was isolated from ascitic fluid by immunoaffinity chromatography using antigens coupled to agarose beads.
<b>Dilution Range</b>	WB 1:500-1:2000 IHC 1:200-1:1000 ELISA 1:10000
<b>Formulation</b>	Ascitic fluid, 0.03% Sodium Azide, 0.5% BSA, 50% Glycerol.
<b>Isotype</b>	IgG1
<b>Storage Instruction</b>	Store at -20°C for up to 1 year from the date of receipt, and avoid repeat freeze-thaw cycles.

### TARGET INFORMATION

<b>Gene ID</b>	2081
<b>Gene Symbol</b>	ERN1
<b>Uniprot ID</b>	ERN1_HUMAN
<b>Immunogen</b>	Purified recombinant fragment of human IRE1 Alpha (aa282-433) expressed in E.coli.
<b>Immunogen Region</b>	282-433
<b>Specificity</b>	ERN1 monoclonal antibody (Serine/Threonine-Protein Kinase/Endoribonuclease Ire1) binds to endogenous Serine/Threonine-Protein Kinase/Endoribonuclease Ire1 at the amino acid region 282-433.
<b>Immunogen Sequence</b>	



Immunohistochemistry analysis of paraffin-embedded human brain tissue (A) and stomach tissue (B), showing cytoplasmic localization with DAB staining using IRE1 Alpha monoclonal antibody.



Western blot analysis using IRE1 Alpha monoclonal antibody against Raji (1), A431 (2), Jurkat (3), HeLa (4) and HEK293 (5) cell lysate.