

Anti-IL1B antibody [3A6] (STJ98171)

STJ98171

GENERAL INFORMATION

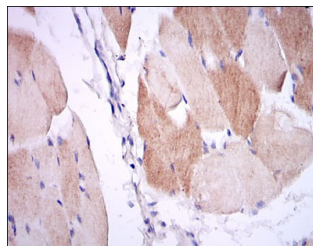
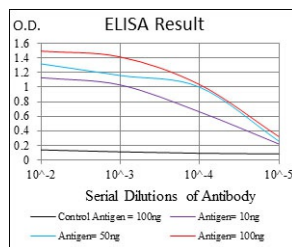
Product Type	Primary antibodies
Short Description	Mouse monoclonal antibody anti-Interleukin-1 Beta is suitable for use in Western Blot, Immunohistochemistry, Immunofluorescence, Immunocytochemistry and ELISA research applications.
Applications	WB, IHC-P, IF, ICC, ELISA
Host/Source	Mouse
Reactivity	Human

PRODUCT PROPERTIES

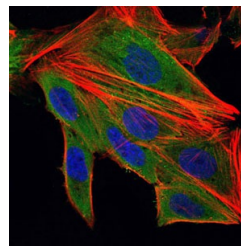
Clonality	Monoclonal
Clone ID	3A6
Concentration	
Conjugation	Unconjugated
Purification	The antibody was isolated from ascitic fluid by immunoaffinity chromatography using antigens coupled to agarose beads.
Dilution Range	WB 1:500-1:2000 IHC 1:200-1:1000 IF 1:200-1:1000 ELISA 1:10000
Formulation	Ascitic fluid, 0.03% Sodium Azide, 0.5% BSA, 50% Glycerol.
Isotype	IgG1
Storage Instruction	Store at -20°C for up to 1 year from the date of receipt, and avoid repeat freeze-thaw cycles.

TARGET INFORMATION

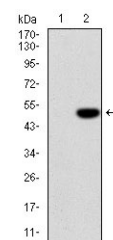
Gene ID	3553
Gene Symbol	IL1B
Uniprot ID	IL1B_HUMAN
Immunogen	Purified recombinant fragment of human IL-1 Beta expressed in E.coli.
Immunogen Region	
Specificity	IL1B monoclonal antibody (Interleukin-1 Beta) binds to endogenous Interleukin-1 Beta.
Immunogen Sequence	



Immunohistochemistry analysis of paraffin-embedded muscle tissues with DAB staining using IL-1 Beta monoclonal antibody.



Immunofluorescence analysis of HepG2 cells using IL-1 Beta monoclonal antibody (green). Blue: DRAQ5 fluorescent DNA dye. Red: Actin filaments have been labeled with Alexa Fluor-555 phalloidin.



Western blot analysis using IL-1 Beta monoclonal antibody against HEK293 (1) and IL-1 Beta-hlgGf transfected HEK293 (2) cell lysate.