

Anti-IGF1R antibody [3C8B1] (STJ98158)

STJ98158

GENERAL INFORMATION

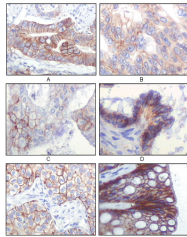
Product Type	Primary antibodies
Short Description	Mouse monoclonal antibody anti-Insulin-Like Growth Factor 1 Receptor is suitable for use in Western Blot, Immunohistochemistry, Immunofluorescence and ELISA research applications.
Applications	WB, IHC-P, IF-P, ELISA
Host/Source	Mouse
Reactivity	Human

PRODUCT PROPERTIES

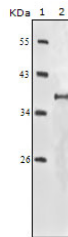
Clonality	Monoclonal
Clone ID	3C8B1
Concentration	
Conjugation	Unconjugated
Purification	The antibody was isolated from ascitic fluid by immunoaffinity chromatography using antigens coupled to agarose beads.
Dilution Range	WB 1:500-1:2000 IHC 1:200-1:1000 ELISA 1:10000
Formulation	Ascitic fluid, 0.03% Sodium Azide, 0.5% BSA, 50% Glycerol.
Isotype	IgG2b
Storage Instruction	Store at -20°C for up to 1 year from the date of receipt, and avoid repeat freeze-thaw cycles.

TARGET INFORMATION

Gene ID	3480
Gene Symbol	IGF1R
Uniprot ID	IGF1R_HUMAN
Immunogen	Purified recombinant fragment of IGF-IR expressed in E.coli.
Immunogen Region	
Specificity	IGF1R monoclonal antibody (Insulin-Like Growth Factor 1 Receptor) binds to endogenous Insulin-Like Growth Factor 1 Receptor.
Immunogen Sequence	



Immunohistochemistry analysis of paraffin-embedded human gastric adenocarcinoma (A), colon adenocarcinoma (B), endometrial carcinoma (uterus) (C), ovary adenocarcinoma (D), lung squamous cell carcinoma (E), stomach epithelium mucosae (F), showing membrane local



Western blot analysis using IGF-IR monoclonal antibody against truncated IGF-IR recombinant protein.