

Anti-IGFBP2 antibody (180-328) [1F6F6] (STJ98157)

STJ98157

GENERAL INFORMATION

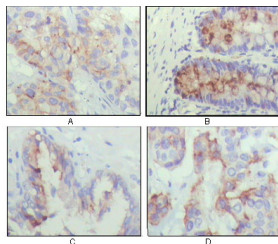
Product Type	Primary antibodies
Short Description	Mouse monoclonal antibody anti-Insulin-Like Growth Factor-Binding Protein 2 (180-328) is suitable for use in Western Blot, Immunohistochemistry, Immunofluorescence and ELISA research applications.
Applications	WB, IHC-P, IF-P, ELISA
Host/Source	Mouse
Reactivity	Human

PRODUCT PROPERTIES

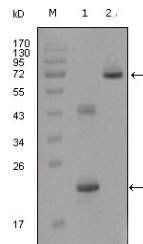
Clonality	Monoclonal
Clone ID	1F6F6
Concentration	
Conjugation	Unconjugated
Purification	The antibody was isolated from ascitic fluid by immunoaffinity chromatography using antigens coupled to agarose beads.
Dilution Range	WB 1:500-1:2000 IHC 1:200-1:1000 ELISA 1:10000
Formulation	Ascitic fluid, 0.03% Sodium Azide, 0.5% BSA, 50% Glycerol.
Isotype	IgG1
Storage Instruction	Store at -20°C for up to 1 year from the date of receipt, and avoid repeat freeze-thaw cycles.

TARGET INFORMATION

Gene ID	3485
Gene Symbol	IGFBP2
Uniprot ID	IBP2_HUMAN
Immunogen	Purified recombinant fragment of protein IGFBP2 (aa180-328) expressed in E.coli.
Immunogen Region	180-328
Specificity	IGFBP2 monoclonal antibody (Insulin-Like Growth Factor-Binding Protein 2) binds to endogenous Insulin-Like Growth Factor-Binding Protein 2 at the amino acid region 180-328.
Immunogen Sequence	



Immunohistochemistry analysis of paraffin-embedded human lung cancer (A), rectum (B), prostate (C), colon cancer (D) showing cytoplasmic localization with DAB staining using IGFBP2 monoclonal antibody.



Western blot analysis using IGFBP2 monoclonal antibody against truncated IGFBP2-His recombinant protein (1) and truncated IGFBP2 (aa40-328)-hlgGfc transfected CHO-K1 cell lysate (2).