

## Anti-HFE antibody [3F1] (STJ98132)

STJ98132

### GENERAL INFORMATION

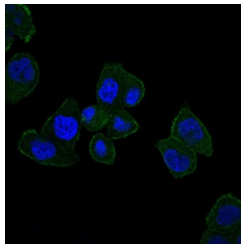
<b>Product Type</b>	Primary antibodies
<b>Short Description</b>	Mouse monoclonal antibody anti-Hereditary Hemochromatosis Protein is suitable for use in Western Blot, Immunofluorescence, Immunocytochemistry and ELISA research applications.
<b>Applications</b>	WB, IF, ICC, ELISA
<b>Host/Source</b>	Mouse
<b>Reactivity</b>	Human

### PRODUCT PROPERTIES

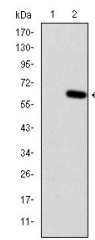
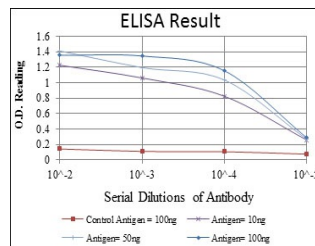
<b>Clonality</b>	Monoclonal
<b>Clone ID</b>	3F1
<b>Concentration</b>	
<b>Conjugation</b>	Unconjugated
<b>Purification</b>	The antibody was isolated from ascitic fluid by immunoaffinity chromatography using antigens coupled to agarose beads.
<b>Dilution Range</b>	WB 1:500-1:2000 IF 1:200-1:1000 ELISA 1:10000
<b>Formulation</b>	Ascitic fluid, 0.03% Sodium Azide, 0.5% BSA, 50% Glycerol.
<b>Isotype</b>	IgG1
<b>Storage Instruction</b>	Store at -20°C for up to 1 year from the date of receipt, and avoid repeat freeze-thaw cycles.

### TARGET INFORMATION

<b>Gene ID</b>	3077
<b>Gene Symbol</b>	HFE
<b>Uniprot ID</b>	HFE_HUMAN
<b>Immunogen</b>	Purified recombinant fragment of human HFE expressed in E.coli.
<b>Region</b>	
<b>Specificity</b>	HFE monoclonal antibody (Hereditary Hemochromatosis Protein) binds to endogenous Hereditary Hemochromatosis Protein.
<b>Immunogen Sequence</b>	



Immunofluorescence analysis of HepG2 cells using HFE monoclonal antibody (green). Blue: DRAQ5 fluorescent DNA dye.



Western blot analysis using HFE monoclonal antibody against HEK293 (1) and HFE-hlgGfC transfected HEK293 (2) cell lysate.