

Anti-MSH6 antibody [3A10H7] (STJ98123)

STJ98123

GENERAL INFORMATION

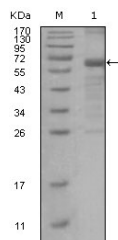
Product Type	Primary antibodies
Short Description	Mouse monoclonal antibody anti-Dna Mismatch Repair Protein Msh6 is suitable for use in Western Blot and ELISA research applications.
Applications	WB, ELISA
Host/Source	Mouse
Reactivity	Human

PRODUCT PROPERTIES

Clonality	Monoclonal
Clone ID	3A10H7
Concentration	
Conjugation	Unconjugated
Purification	The antibody was isolated from ascitic fluid by immunoaffinity chromatography using antigens coupled to agarose beads.
Dilution Range	WB 1:500-1:2000 ELISA 1:10000
Formulation	Ascitic fluid, 0.03% Sodium Azide, 0.5% BSA, 50% Glycerol.
Isotype	IgG1
Storage Instruction	Store at -20°C for up to 1 year from the date of receipt, and avoid repeat freeze-thaw cycles.

TARGET INFORMATION

Gene ID	2956
Gene Symbol	MSH6
Uniprot ID	MSH6_HUMAN
Immunogen	Purified recombinant fragment of GTBP expressed in E.coli.
Immunogen Region	
Specificity	MSH6 monoclonal antibody (Dna Mismatch Repair Protein Msh6) binds to endogenous Dna Mismatch Repair Protein Msh6.
Immunogen Sequence	



Western blot analysis using GTBP monoclonal antibody against truncated MSH6 recombinant protein.

This product is suitable for in-vitro studies under the RESEARCH USE ONLY [RUO] licence. This product must not be used as for diagnostic or other medical purposes.
St John's Laboratory Ltd, Knowledge Dock Business Centre, University Way, London, E16 2RD | Tel: 0208 223 3081