

Anti-GPI antibody [1B7D7] (STJ98114)

STJ98114

GENERAL INFORMATION

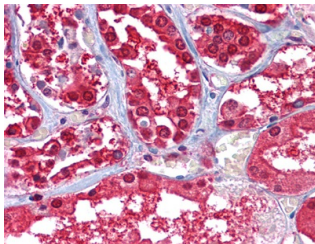
Product Type	Primary antibodies
Short Description	Mouse monoclonal antibody anti-Glucose-6-Phosphate Isomerase is suitable for use in Western Blot, Immunohistochemistry, Immunofluorescence, Immunocytochemistry and ELISA research applications.
Applications	WB, IHC-P, IF, ICC, ELISA
Host/Source	Mouse
Reactivity	Human

PRODUCT PROPERTIES

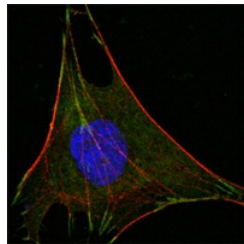
Clonality	Monoclonal
Clone ID	1B7D7
Concentration	
Conjugation	Unconjugated
Purification	The antibody was isolated from ascitic fluid by immunoaffinity chromatography using antigens coupled to agarose beads.
Dilution Range	WB 1:500-1:2000 IHC 1:200-1:1000 IF 1:200-1:1000 ELISA 1:10000
Formulation	Ascitic fluid, 0.03% Sodium Azide, 0.5% BSA, 50% Glycerol.
Isotype	IgG1
Storage Instruction	Store at -20°C for up to 1 year from the date of receipt, and avoid repeat freeze-thaw cycles.

TARGET INFORMATION

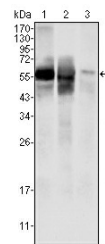
Gene ID	2821
Gene Symbol	GPI
Uniprot ID	G6PI_HUMAN
Immunogen	Purified recombinant fragment of human GPI expressed in E.coli.
Immunogen Region	
Specificity	GPI monoclonal antibody (Glucose-6-Phosphate Isomerase) binds to endogenous Glucose-6-Phosphate Isomerase.
Immunogen Sequence	



Immunohistochemistry analysis of paraffin-embedded human kidney tissues with AEC staining using GPI monoclonal antibody.



Confocal immunofluorescence analysis of L-02 cells using GPI monoclonal antibody (green). Red: Actin filaments have been labeled with DY-554 phalloidin. Blue: DRAQ5 fluorescent DNA dye.



Western blot analysis using GPI monoclonal antibody against HepG2 (1), SMMC-7721 (2) cell lysate and rat liver tissues lysate (3).

This product is suitable for in-vitro studies under the RESEARCH USE ONLY [RUO] licence. This product must not be used as for diagnostic or other medical purposes.
St John's Laboratory Ltd, Knowledge Dock Business Centre, University Way, London, E16 2RD | Tel: 0208 223 3081