

Anti-MS4A1 antibody [1E5] (STJ98109)

STJ98109

GENERAL INFORMATION

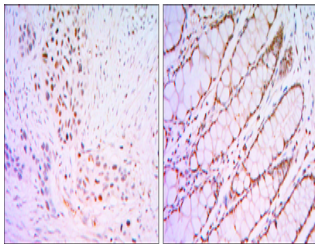
Product Type	Primary antibodies
Short Description	Mouse monoclonal antibody anti-B-Lymphocyte antigen Cd20 is suitable for use in Western Blot, Immunohistochemistry, Immunofluorescence and ELISA research applications.
Applications	WB, IHC-P, IF-P, ELISA
Host/Source	Mouse
Reactivity	Human

PRODUCT PROPERTIES

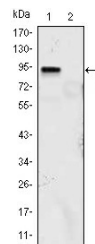
Clonality	Monoclonal
Clone ID	1E5
Concentration	
Conjugation	Unconjugated
Purification	The antibody was isolated from ascitic fluid by immunoaffinity chromatography using antigens coupled to agarose beads.
Dilution Range	WB 1:500-1:2000 IHC 1:200-1:1000 ELISA 1:10000
Formulation	Ascitic fluid, 0.03% Sodium Azide, 0.5% BSA, 50% Glycerol.
Isotype	IgG1
Storage Instruction	Store at -20°C for up to 1 year from the date of receipt, and avoid repeat freeze-thaw cycles.

TARGET INFORMATION

Gene ID	931
Gene Symbol	MS4A1
Uniprot ID	CD20_HUMAN
Immunogen	Purified recombinant fragment of human GKLF expressed in E.coli.
Immunogen Region	
Specificity	MS4A1 monoclonal antibody (B-Lymphocyte Antigen Cd20) binds to endogenous B-Lymphocyte Antigen Cd20.
Immunogen Sequence	



Immunohistochemistry analysis of paraffin-embedded lung cancer tissues (left) and human rectum tissues (right) with DAB staining using GKLF monoclonal antibody.



Western blot analysis using GKLF monoclonal antibody against KLF4 (aa2-470)-hlgGfc transfected HEK293 (1) and HEK293 (2) cell lysate.