

Anti-GCG antibody [2F9] (STJ98103)

STJ98103

GENERAL INFORMATION

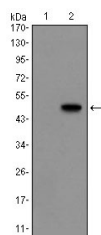
Product Type	Primary antibodies
Short Description	Mouse monoclonal antibody anti-Pro-Glucagon Cleaved Into-Glicentin-Glicentin-Related Polypeptide is suitable for use in Western Blot and ELISA research applications.
Applications	WB, ELISA
Host/Source	Mouse
Reactivity	Human

PRODUCT PROPERTIES

Clonality	Monoclonal
Clone ID	2F9
Concentration	
Conjugation	Unconjugated
Purification	The antibody was isolated from ascitic fluid by immunoaffinity chromatography using antigens coupled to agarose beads.
Dilution Range	WB 1:500-1:2000 ELISA 1:10000
Formulation	Ascitic fluid, 0.03% Sodium Azide, 0.5% BSA, 50% Glycerol.
Isotype	IgG1
Storage	Store at -20°C for up to 1 year from the date of receipt, and avoid repeat freeze-thaw cycles.
Instruction	

TARGET INFORMATION

Gene ID	2641
Gene Symbol	GCG
Uniprot ID	GLUC_HUMAN
Immunogen	Purified recombinant fragment of human GCG expressed in E.coli.
Immunogen Region	
Specificity	GCG monoclonal antibody (Pro-Glucagon Cleaved Into-Glicentin-Glicentin-Related Polypeptide) binds to endogenous Pro-Glucagon Cleaved Into-Glicentin-Glicentin-Related Polypeptide.
Immunogen Sequence	



Western blot analysis using GCG monoclonal antibody against HEK293 (1) and GCG-hlgFc transfected HEK293 (2) cell lysate.

This product is suitable for in-vitro studies under the RESEARCH USE ONLY [RUO] licence. This product must not be used as for diagnostic or other medical purposes.
St John's Laboratory Ltd, Knowledge Dock Business Centre, University Way, London, E16 2RD | Tel: 0208 223 3081