

Anti-G6PD antibody [2H7] (STJ98094)

STJ98094

GENERAL INFORMATION

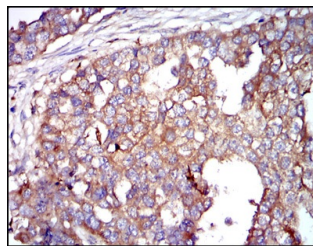
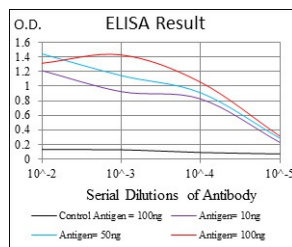
Product Type	Primary antibodies
Short Description	Mouse monoclonal antibody anti-Glucose-6-Phosphate 1-Dehydrogenase is suitable for use in Western Blot, Immunohistochemistry, Immunofluorescence, Flow Cytometry and ELISA research applications.
Applications	WB, IHC-P, IF-P, FC, ELISA
Host/Source	Mouse
Reactivity	Human

PRODUCT PROPERTIES

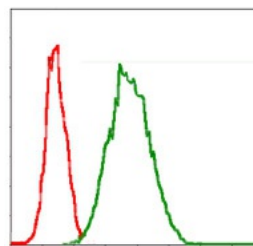
Clonality	Monoclonal
Clone ID	2H7
Concentration	
Conjugation	Unconjugated
Purification	The antibody was isolated from ascitic fluid by immunoaffinity chromatography using antigens coupled to agarose beads.
Dilution Range	WB 1:500-1:2000 IHC 1:200-1:1000 FC 1:200-1:400 ELISA 1:10000
Formulation	Ascitic fluid, 0.03% Sodium Azide, 0.5% BSA, 50% Glycerol.
Isotype	IgG1
Storage Instruction	Store at -20°C for up to 1 year from the date of receipt, and avoid repeat freeze-thaw cycles.

TARGET INFORMATION

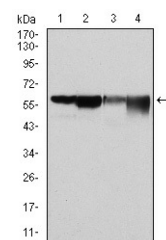
Gene ID	2539
Gene Symbol	G6PD
Uniprot ID	G6PD_HUMAN
Immunogen	Purified recombinant fragment of human G6PD expressed in E.coli.
Immunogen Region	
Specificity	G6PD monoclonal antibody (Glucose-6-Phosphate 1-Dehydrogenase) binds to endogenous Glucose-6-Phosphate 1-Dehydrogenase.
Immunogen Sequence	



Immunohistochemistry analysis of paraffin-embedded breast cancer tissues with DAB staining using G6PD monoclonal antibody.



Flow cytometric analysis of Jurkat cells using G6PD monoclonal antibody (green) and negative control (red).



Western blot analysis using G6PD monoclonal antibody against HeLa (1), MCF-7 (2), Jurkat (3) and K562 (4) cell lysate.

This product is suitable for in-vitro studies under the RESEARCH USE ONLY [RUO] licence. This product must not be used as for diagnostic or other medical purposes.
St John's Laboratory Ltd, Knowledge Dock Business Centre, University Way, London, E16 2RD | Tel: 0208 223 3081