

Anti-G6PD antibody [5E12] (STJ98093)

STJ98093

GENERAL INFORMATION

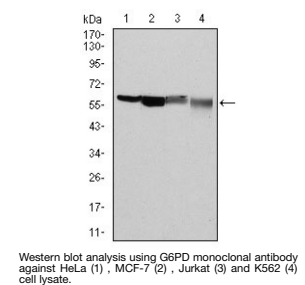
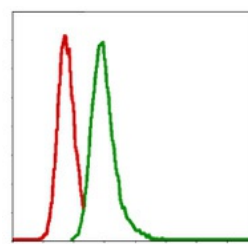
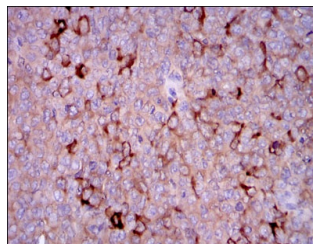
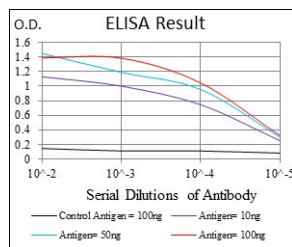
| | |
|--------------------------|---|
| Product Type | Primary antibodies |
| Short Description | Mouse monoclonal antibody anti-Glucose-6-Phosphate 1-Dehydrogenase is suitable for use in Western Blot, Immunohistochemistry, Immunofluorescence, Flow Cytometry and ELISA research applications. |
| Applications | WB, IHC-P, IF-P, FC, ELISA |
| Host/Source | Mouse |
| Reactivity | Human |

PRODUCT PROPERTIES

| | |
|----------------------------|--|
| Clonality | Monoclonal |
| Clone ID | 5E12 |
| Concentration | |
| Conjugation | Unconjugated |
| Purification | The antibody was isolated from ascitic fluid by immunoaffinity chromatography using antigens coupled to agarose beads. |
| Dilution Range | WB 1:500-1:2000 IHC 1:200-1:1000 FC 1:200-1:400 ELISA 1:10000 |
| Formulation | Ascitic fluid, 0.03% Sodium Azide, 0.5% BSA, 50% Glycerol. |
| Isotype | IgG1 |
| Storage Instruction | Store at -20°C for up to 1 year from the date of receipt, and avoid repeat freeze-thaw cycles. |

TARGET INFORMATION

| | |
|---------------------------|---|
| Gene ID | 2539 |
| Gene Symbol | G6PD |
| Uniprot ID | G6PD_HUMAN |
| Immunogen | Purified recombinant fragment of human G6PD expressed in E.coli. |
| Immunogen Region | |
| Specificity | G6PD monoclonal antibody (Glucose-6-Phosphate 1-Dehydrogenase) binds to endogenous Glucose-6-Phosphate 1-Dehydrogenase. |
| Immunogen Sequence | |



This product is suitable for in-vitro studies under the RESEARCH USE ONLY [RUO] licence. This product must not be used as for diagnostic or other medical purposes.
St John's Laboratory Ltd, Knowledge Dock Business Centre, University Way, London, E16 2RD | Tel: 0208 223 3081