

Anti-FGG antibody [4H9] (STJ98072)

STJ98072

GENERAL INFORMATION

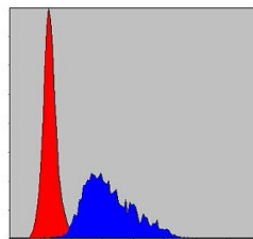
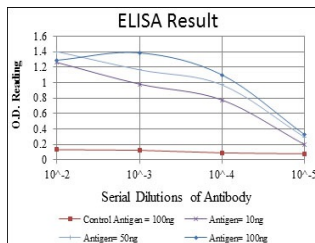
Product Type	Primary antibodies
Short Description	Mouse monoclonal antibody anti-Fibrinogen Gamma Chain is suitable for use in Western Blot, Immunohistochemistry, Immunofluorescence, Immunocytochemistry, Flow Cytometry and ELISA research applications.
Applications	WB, IHC-P, IF, ICC, FC, ELISA
Host/Source	Mouse
Reactivity	Human

PRODUCT PROPERTIES

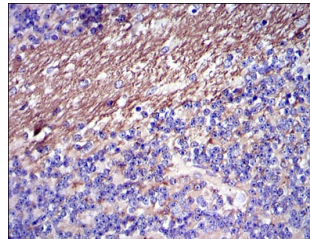
Clonality	Monoclonal
Clone ID	4H9
Concentration	
Conjugation	Unconjugated
Purification	The antibody was isolated from ascitic fluid by immunoaffinity chromatography using antigens coupled to agarose beads.
Dilution Range	WB 1:500-1:2000 IHC 1:200-1:1000 IF 1:200-1:1000 FC 1:200-1:400 ELISA 1:10000
Formulation	Ascitic fluid, 0.03% Sodium Azide, 0.5% BSA, 50% Glycerol.
Isotype	IgG2a
Storage	Store at -20°C for up to 1 year from the date of receipt, and avoid repeat freeze-thaw cycles.
Instruction	

TARGET INFORMATION

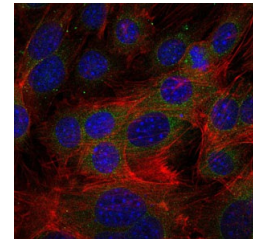
Gene ID	2266
Gene Symbol	FGG
Uniprot ID	FIBG_HUMAN
Immunogen	Purified recombinant fragment of human Fibrinogen Gamma expressed in E.coli.
Immunogen Region	
Specificity	FGG monoclonal antibody (Fibrinogen Gamma Chain) binds to endogenous Fibrinogen Gamma Chain.
Immunogen Sequence	



Flow cytometric analysis of HepG2 cells using Fibrinogen Gamma monoclonal antibody (blue) and negative control (red).



Immunohistochemistry analysis of paraffin-embedded cerebellum tissues with DAB staining using Fibrinogen Gamma monoclonal antibody.



Immunofluorescence analysis of ST3-L1 cells using Fibrinogen Gamma monoclonal antibody (green). Blue: DAPI fluorescent DNA dye. Red: Actin filaments have been labeled with Alexa Fluor-555 phalloidin.

This product is suitable for in-vitro studies under the RESEARCH USE ONLY [RUO] licence. This product must not be used as for diagnostic or other medical purposes.
St John's Laboratory Ltd, Knowledge Dock Business Centre, University Way, London, E16 2RD | Tel: 0208 223 3081